

Datasheet for ABIN2791599
anti-JOSD1 antibody (N-Term)[Go to Product page](#)

1 Image

Overview

Quantity:	100 µL
Target:	JOSD1
Binding Specificity:	N-Term
Reactivity:	Human, Mouse, Rat, Guinea Pig, Cow, Dog, Horse, Rabbit, Zebrafish (Danio rerio)
Host:	Rabbit
Clonality:	Polyclonal
Conjugate:	This JOSD1 antibody is un-conjugated
Application:	Western Blotting (WB)

Product Details

Immunogen:	The immunogen is a synthetic peptide directed towards the N-terminal region of Human JOSD1
Sequence:	DKAKSESELEL PQAAPPQIYH EKQRRELCAL HALNNVFQDS NAFTRDTLQE
Predicted Reactivity:	Cow: 100%, Dog: 100%, Guinea Pig: 100%, Horse: 93%, Human: 100%, Mouse: 100%, Rabbit: 100%, Rat: 100%, Zebrafish: 86%
Characteristics:	This is a rabbit polyclonal antibody against JOSD1. It was validated on Western Blot.
Purification:	Affinity Purified

Target Details

Target:	JOSD1
Alternative Name:	JOSD1 (JOSD1 Products)

Target Details

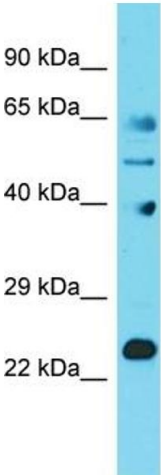
Background:	JOSD1 has low protease activity towards poly-ubiquitin chains (in vitro) and may act as a deubiquitinating enzyme. Alias Symbols: dJ508I15.2 Protein Interaction Partner: NOTCH2NL, KRTAP10-3, KRTAP10-8, KRTAP10-4, KRT40, KRTAP9-2, MID2, UBC, TRAF1, TRIM27, KRT31, KRTAP5-9, TRIM23, STUB1, TRIM63, PJA1, USP28, TRIM54, USP21, USP15, LNX1, ELAVL1, TIMM8A, CALM1, Protein Size: 202
Molecular Weight:	23 kDa
Gene ID:	9929
NCBI Accession:	NM_014876 , NP_055691
UniProt:	Q15040

Application Details

Application Notes:	Optimal working dilution should be determined by the investigator.
Restrictions:	For Research Use only

Handling

Format:	Liquid
Concentration:	1 mg/mL
Buffer:	Liquid. Purified antibody supplied in 1x PBS buffer with 0.09 % (w/v) sodium azide and 2 % sucrose.
Preservative:	Sodium azide
Precaution of Use:	This product contains Sodium azide: a POISONOUS AND HAZARDOUS SUBSTANCE which should be handled by trained staff only.
Handling Advice:	Avoid repeat freeze-thaw cycles.
Storage:	-20 °C
Storage Comment:	For short term use, store at 2-8°C up to 1 week. For long term storage, store at -20°C in small aliquots to prevent freeze-thaw cycles.



Host: Rabbit
Target Name: J OSD1
Sample Tissue: Fetal Lung Lysate
Antibody Dilution: 1.0µg/ml

Western Blotting

Image 1. Host: Rabbit Target Name: J OSD1 Sample
Tissue: Human Fetal Lung Antibody Dilution: 1ug/ml