



Datasheet for ABIN2791603  
**anti-KBTBD12 antibody (N-Term)**



[Go to Product page](#)

1 Image

Overview

Quantity:	100 µL
Target:	KBTBD12
Binding Specificity:	N-Term
Reactivity:	Human, Rabbit, Rat, Cow, Dog, Horse, Mouse, Guinea Pig
Host:	Rabbit
Clonality:	Polyclonal
Conjugate:	This KBTBD12 antibody is un-conjugated
Application:	Western Blotting (WB)

Product Details

Immunogen:	The immunogen is a synthetic peptide directed towards the N-terminal region of Human KBTBD12
Sequence:	FAKQIGAEDL SDRSKKYLYQ HFAEVSLEEE ILEIEVHQFL TLIKDDLNI
Predicted Reactivity:	Cow: 79%, Dog: 93%, Guinea Pig: 93%, Horse: 93%, Human: 100%, Mouse: 93%, Rabbit: 79%, Rat: 93%
Characteristics:	This is a rabbit polyclonal antibody against KBTBD12. It was validated on Western Blot.
Purification:	Affinity Purified

Target Details

Target:	KBTBD12
---------	---------

## Target Details

---

Alternative Name: [KBTBD12 \(KBTBD12 Products\)](#)

Background: The function of this protein remains unknown.  
Alias Symbols: KLHDC6  
Protein Size: 623

Molecular Weight: 70 kDa

Gene ID: 166348

NCBI Accession: [NM\\_207335, NP\\_997218](#)

UniProt: [Q3ZCT8](#)

## Application Details

---

Application Notes: Optimal working dilution should be determined by the investigator.

Restrictions: For Research Use only

## Handling

---

Format: Liquid

Concentration: 1 mg/mL

Buffer: Liquid. Purified antibody supplied in 1x PBS buffer with 0.09 % (w/v) sodium azide and 2 % sucrose.

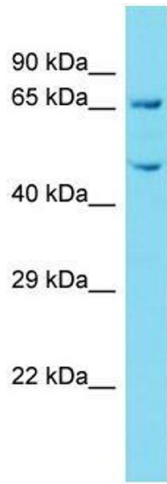
Preservative: Sodium azide

Precaution of Use: This product contains Sodium azide: a POISONOUS AND HAZARDOUS SUBSTANCE which should be handled by trained staff only.

Handling Advice: Avoid repeat freeze-thaw cycles.

Storage: -20 °C

Storage Comment: For short term use, store at 2-8°C up to 1 week. For long term storage, store at -20°C in small aliquots to prevent freeze-thaw cycles.



### Western Blotting

Image 1.