



[Go to Product page](#)

Datasheet for ABIN2791607

anti-KIAA0355 antibody (C-Term)

1 Image

Overview

Quantity:	100 µL
Target:	KIAA0355
Binding Specificity:	C-Term
Reactivity:	Human, Guinea Pig, Horse, Mouse, Pig, Rabbit, Rat, Cow, Zebrafish (Danio rerio), Dog
Host:	Rabbit
Clonality:	Polyclonal
Conjugate:	This KIAA0355 antibody is un-conjugated
Application:	Western Blotting (WB)

Product Details

Immunogen:	The immunogen is a synthetic peptide directed towards the C-terminal region of Human KIAA0355
Sequence:	DSASSSDETS SANGDSLFSM FSGPDLVAAV KQRRKHSSGE QDTSTLPSP
Predicted Reactivity:	Cow: 93%, Dog: 93%, Guinea Pig: 92%, Horse: 93%, Human: 100%, Mouse: 93%, Pig: 93%, Rabbit: 93%, Rat: 93%, Zebrafish: 83%
Characteristics:	This is a rabbit polyclonal antibody against KIAA0355. It was validated on Western Blot.
Purification:	Affinity Purified

Target Details

Target:	KIAA0355
---------	----------

Target Details

Alternative Name: [KIAA0355 \(KIAA0355 Products\)](#)

Background: The function of this protein remains unknown.
Alias Symbols: -
Protein Interaction Partner: YWHAB,
Protein Size: 1070

Molecular Weight: 115 kDa

Gene ID: 9710

NCBI Accession: [NM_014686](#), [NP_055501](#)

UniProt: [O15063](#)

Application Details

Application Notes: Optimal working dilution should be determined by the investigator.

Restrictions: For Research Use only

Handling

Format: Liquid

Concentration: 1 mg/mL

Buffer: Liquid. Purified antibody supplied in 1x PBS buffer with 0.09 % (w/v) sodium azide and 2 % sucrose.

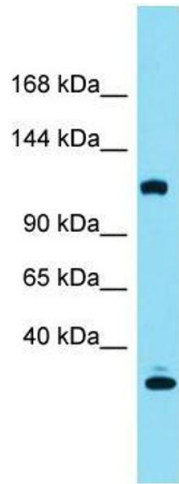
Preservative: Sodium azide

Precaution of Use: This product contains Sodium azide: a POISONOUS AND HAZARDOUS SUBSTANCE which should be handled by trained staff only.

Handling Advice: Avoid repeat freeze-thaw cycles.

Storage: -20 °C

Storage Comment: For short term use, store at 2-8°C up to 1 week. For long term storage, store at -20°C in small aliquots to prevent freeze-thaw cycles.



Western Blotting

Image 1.