



[Go to Product page](#)

Datasheet for ABIN2791612
anti-KIAA1045 antibody (N-Term)

1 Image

Overview

Quantity:	100 µL
Target:	KIAA1045
Binding Specificity:	N-Term
Reactivity:	Human, Mouse, Cow, Dog, Guinea Pig, Horse, Pig, Rabbit, Rat
Host:	Rabbit
Clonality:	Polyclonal
Conjugate:	This KIAA1045 antibody is un-conjugated
Application:	Western Blotting (WB)

Product Details

Immunogen:	The immunogen is a synthetic peptide directed towards the N-terminal region of Human KIAA1045
Sequence:	RDGRGVEPEE FDRTSRFTPP AFIRPTRKLD DDKPPEICLE PREPVVNDEM
Predicted Reactivity:	Cow: 100%, Dog: 100%, Guinea Pig: 93%, Horse: 100%, Human: 100%, Mouse: 100%, Pig: 100%, Rabbit: 93%, Rat: 100%
Characteristics:	This is a rabbit polyclonal antibody against KIAA1045. It was validated on Western Blot.
Purification:	Affinity Purified

Target Details

Target:	KIAA1045
---------	----------

Target Details

Alternative Name: [KIAA1045 \(KIAA1045 Products\)](#)

Background: The function of this protein remains unknown.
Alias Symbols: RP11-392A14.4
Protein Size: 400

Molecular Weight: 45 kDa

Gene ID: 23349

NCBI Accession: [NM_015297](#), [NP_056112](#)

UniProt: [Q9UPV7](#)

Application Details

Application Notes: Optimal working dilution should be determined by the investigator.

Restrictions: For Research Use only

Handling

Format: Liquid

Concentration: 1 mg/mL

Buffer: Liquid. Purified antibody supplied in 1x PBS buffer with 0.09 % (w/v) sodium azide and 2 % sucrose.

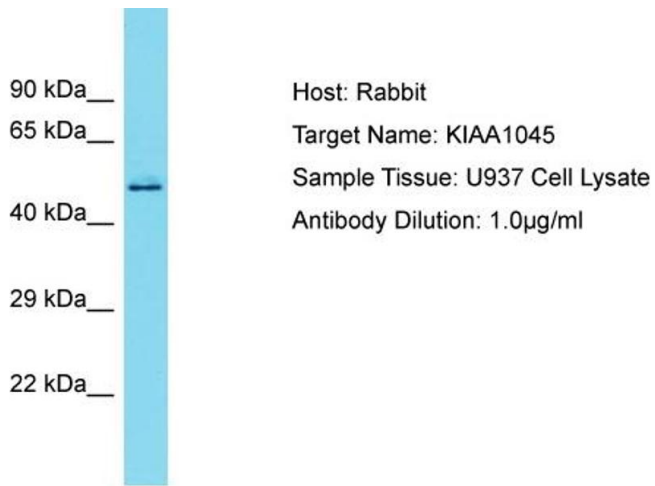
Preservative: Sodium azide

Precaution of Use: This product contains Sodium azide: a POISONOUS AND HAZARDOUS SUBSTANCE which should be handled by trained staff only.

Handling Advice: Avoid repeat freeze-thaw cycles.

Storage: -20 °C

Storage Comment: For short term use, store at 2-8°C up to 1 week. For long term storage, store at -20°C in small aliquots to prevent freeze-thaw cycles.



Western Blotting

Image 1. Host: Rabbit Target Name: KIAA1045 Sample Type: U937 Whole Cell lysates Antibody Dilution: 1.0ug/ml