



[Go to Product page](#)

Datasheet for ABIN2791616

anti-KIAA1522 antibody (C-Term)

1 Image

Overview

Quantity:	100 µL
Target:	KIAA1522
Binding Specificity:	C-Term
Reactivity:	Human, Cow, Guinea Pig, Horse
Host:	Rabbit
Clonality:	Polyclonal
Conjugate:	This KIAA1522 antibody is un-conjugated
Application:	Western Blotting (WB)

Product Details

Immunogen:	The immunogen is a synthetic peptide directed towards the C-terminal region of Human KIAA1522
Sequence:	KPSVGVPPPA SPSYPRAEPL TAPPTNGLPH TQDRTKRELA ENGGVLQLVG
Predicted Reactivity:	Cow: 79%, Guinea Pig: 79%, Horse: 79%, Human: 100%
Characteristics:	This is a rabbit polyclonal antibody against KIAA1522. It was validated on Western Blot.
Purification:	Affinity Purified

Target Details

Target:	KIAA1522
Alternative Name:	KIAA1522 (KIAA1522 Products)

Target Details

Background: The function of this protein remains unknown.
Alias Symbols: -
Protein Interaction Partner: WWOX, SLMAP, SFRP1, NCK1, SH3KBP1, UBC,
Protein Size: 1094

Molecular Weight: 112 kDa

Gene ID: 57648

NCBI Accession: [NM_020888](#), [NP_065939](#)

Application Details

Application Notes: Optimal working dilution should be determined by the investigator.

Restrictions: For Research Use only

Handling

Format: Liquid

Concentration: 1 mg/mL

Buffer: Liquid. Purified antibody supplied in 1x PBS buffer with 0.09 % (w/v) sodium azide and 2 % sucrose.

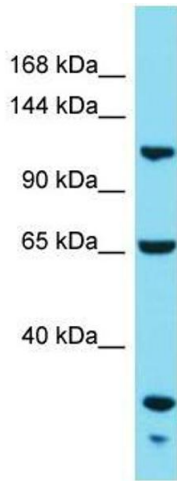
Preservative: Sodium azide

Precaution of Use: This product contains Sodium azide: a POISONOUS AND HAZARDOUS SUBSTANCE which should be handled by trained staff only.

Handling Advice: Avoid repeat freeze-thaw cycles.

Storage: -20 °C

Storage Comment: For short term use, store at 2-8°C up to 1 week. For long term storage, store at -20°C in small aliquots to prevent freeze-thaw cycles.



Western Blotting

Image 1.