



[Go to Product page](#)

Datasheet for ABIN2791617
anti-FAM214B antibody (Middle Region)

1 Image

Overview

Quantity:	100 µL
Target:	FAM214B
Binding Specificity:	Middle Region
Reactivity:	Human, Cow, Dog, Guinea Pig, Horse, Mouse, Rabbit, Rat, Saccharomyces cerevisiae
Host:	Rabbit
Clonality:	Polyclonal
Conjugate:	This FAM214B antibody is un-conjugated
Application:	Western Blotting (WB)

Product Details

Immunogen:	The immunogen is a synthetic peptide directed towards the middle region of human FAM214B
Sequence:	SPGTANGHSP EHTPPGPGPP GPCPTKRLL PAGEAPDVSS EEEGPAPRRR
Predicted Reactivity:	Cow: 92%, Dog: 92%, Guinea Pig: 92%, Horse: 92%, Human: 100%, Mouse: 92%, Rabbit: 92%, Rat: 92%, Yeast: 77%
Characteristics:	This is a rabbit polyclonal antibody against KIAA1539. It was validated on Western Blot.
Purification:	Affinity Purified

Target Details

Target:	FAM214B
Alternative Name:	KIAA1539 (FAM214B Products)

Target Details

Background: Alias Symbols: KIAA1539
Protein Size: 443

Molecular Weight: 46 kDa

Gene ID: 80256

NCBI Accession: [NM_025182](#), [NP_079458](#)

UniProt: [Q7L5A3](#)

Application Details

Application Notes: Optimal working dilution should be determined by the investigator.

Restrictions: For Research Use only

Handling

Format: Liquid

Concentration: 1 mg/mL

Buffer: Liquid. Purified antibody supplied in 1x PBS buffer with 0.09 % (w/v) sodium azide and 2 % sucrose.

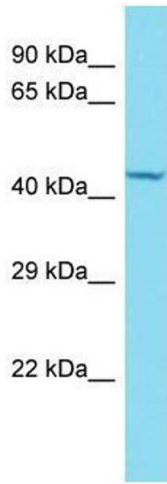
Preservative: Sodium azide

Precaution of Use: This product contains Sodium azide: a POISONOUS AND HAZARDOUS SUBSTANCE which should be handled by trained staff only.

Handling Advice: Avoid repeat freeze-thaw cycles.

Storage: -20 °C

Storage Comment: For short term use, store at 2-8°C up to 1 week. For long term storage, store at -20°C in small aliquots to prevent freeze-thaw cycles.



Western Blotting

Image 1.