



[Go to Product page](#)

Datasheet for ABIN2791618
anti-KIAA1683 antibody (N-Term)

1 Image

Overview

Quantity:	100 µL
Target:	KIAA1683
Binding Specificity:	N-Term
Reactivity:	Human
Host:	Rabbit
Clonality:	Polyclonal
Conjugate:	This KIAA1683 antibody is un-conjugated
Application:	Western Blotting (WB)

Product Details

Immunogen:	The immunogen is a synthetic peptide directed towards the N-terminal region of Human KIAA1683
Sequence:	LPDKMEKAPP QPQHEGLKSK EHLPPQPAEG KTASRRVPRL RAVVESQAFK
Predicted Reactivity:	Human: 100%
Characteristics:	This is a rabbit polyclonal antibody against KIAA1683. It was validated on Western Blot.
Purification:	Affinity Purified

Target Details

Target:	KIAA1683
Alternative Name:	KIAA1683 (KIAA1683 Products)

Target Details

Background: The function of this protein remains unknown.
Alias Symbols: -
Protein Interaction Partner: RBM17, LZTS2, PUF60, MID2, SIAH1, TRIM27, CALML3, CALM3, CALM2, CALM1, UBC, PLSCR1, TRIP6,
Protein Size: 1367

Molecular Weight: 147 kDa

Gene ID: 80726

NCBI Accession: [NM_001145304](#), [NP_001138776](#)

UniProt: [Q2KHR5](#)

Application Details

Application Notes: Optimal working dilution should be determined by the investigator.

Restrictions: For Research Use only

Handling

Format: Liquid

Concentration: 1 mg/mL

Buffer: Liquid. Purified antibody supplied in 1x PBS buffer with 0.09 % (w/v) sodium azide and 2 % sucrose.

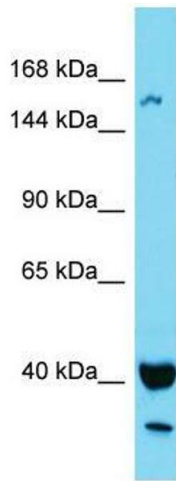
Preservative: Sodium azide

Precaution of Use: This product contains Sodium azide: a POISONOUS AND HAZARDOUS SUBSTANCE which should be handled by trained staff only.

Handling Advice: Avoid repeat freeze-thaw cycles.

Storage: -20 °C

Storage Comment: For short term use, store at 2-8°C up to 1 week. For long term storage, store at -20°C in small aliquots to prevent freeze-thaw cycles.



Western Blotting

Image 1.