



[Go to Product page](#)

Datasheet for ABIN2791621

## anti-KIAA2013 antibody (C-Term)

### 1 Image

#### Overview

Quantity:	100 µL
Target:	KIAA2013
Binding Specificity:	C-Term
Reactivity:	Human, Mouse, Rat, Cow, Dog, Horse, Rabbit, Guinea Pig, Sheep, Zebrafish (Danio rerio)
Host:	Rabbit
Clonality:	Polyclonal
Conjugate:	This KIAA2013 antibody is un-conjugated
Application:	Western Blotting (WB)

#### Product Details

Immunogen:	The immunogen is a synthetic peptide directed towards the C-terminal region of Human KIAA2013
Sequence:	QQDPGLPFLF WFSVASLITL FHLFLFKLIY NEYCGPGAKP LFRSKEDPSV
Predicted Reactivity:	Cow: 86%, Dog: 100%, Guinea Pig: 100%, Horse: 93%, Human: 100%, Mouse: 100%, Rabbit: 93%, Rat: 100%, Sheep: 86%, Zebrafish: 86%
Characteristics:	This is a rabbit polyclonal antibody against KIAA2013. It was validated on Western Blot.
Purification:	Affinity Purified

#### Target Details

Target:	KIAA2013
---------	----------

## Target Details

---

Alternative Name:	KIAA2013 ( <a href="#">KIAA2013 Products</a> )
Background:	The function of this protein remains unknown. Alias Symbols: - Protein Interaction Partner: env, ZMPSTE24, HNRNPR, HSPA1L, HNRNPU, ELAVL1, UBC, Protein Size: 634
Molecular Weight:	64 kDa
Gene ID:	90231
NCBI Accession:	<a href="#">NM_138346</a> , <a href="#">NP_612355</a>
UniProt:	<a href="#">Q8IYS2</a>

## Application Details

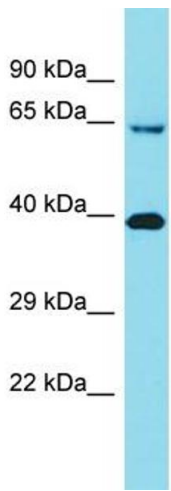
---

Application Notes:	Optimal working dilution should be determined by the investigator.
Restrictions:	For Research Use only

## Handling

---

Format:	Liquid
Concentration:	1 mg/mL
Buffer:	Liquid. Purified antibody supplied in 1x PBS buffer with 0.09 % (w/v) sodium azide and 2 % sucrose.
Preservative:	Sodium azide
Precaution of Use:	This product contains Sodium azide: a POISONOUS AND HAZARDOUS SUBSTANCE which should be handled by trained staff only.
Handling Advice:	Avoid repeat freeze-thaw cycles.
Storage:	-20 °C
Storage Comment:	For short term use, store at 2-8°C up to 1 week. For long term storage, store at -20°C in small aliquots to prevent freeze-thaw cycles.



Host: Rabbit  
Target Name: KIAA2013  
Sample Tissue: Placenta Lysate  
Antibody Dilution: 1.0µg/ml

### Western Blotting

**Image 1.** Host: Rabbit Target Name: KIAA2013 Sample  
Tissue: Human Placenta Antibody Dilution: 1ug/ml