



[Go to Product page](#)

Datasheet for ABIN2791622

anti-KIAA2013 antibody (C-Term)

1 Image

Overview

Quantity:	100 µL
Target:	KIAA2013
Binding Specificity:	C-Term
Reactivity:	Human, Mouse, Rat, Cow, Dog, Horse, Rabbit, Pig
Host:	Rabbit
Clonality:	Polyclonal
Conjugate:	This KIAA2013 antibody is un-conjugated
Application:	Western Blotting (WB)

Product Details

Immunogen:	The immunogen is a synthetic peptide directed towards the C-terminal region of Human KIAA2013
Sequence:	TDHTPSGLT VNLTLYYMLS CSPAPLLSPS LSHRERDQME STLNYEDHCF
Predicted Reactivity:	Cow: 93%, Dog: 100%, Horse: 86%, Human: 100%, Mouse: 86%, Pig: 93%, Rabbit: 93%, Rat: 93%
Characteristics:	This is a rabbit polyclonal antibody against KIAA2013. It was validated on Western Blot.
Purification:	Affinity Purified

Target Details

Target:	KIAA2013
Alternative Name:	KIAA2013 (KIAA2013 Products)

Target Details

Background: The function of this protein remains unknown.
Protein Interaction Partner: env, ZMPSTE24, HNRNPR, HSPA1L, HNRNPU, ELAVL1, UBC,
Protein Size: 667

Molecular Weight: 73 kDa

Gene ID: 90231

Application Details

Application Notes: Optimal working dilution should be determined by the investigator.

Restrictions: For Research Use only

Handling

Format: Liquid

Concentration: 1 mg/mL

Buffer: Liquid. Purified antibody supplied in 1x PBS buffer with 0.09 % (w/v) sodium azide and 2 % sucrose.

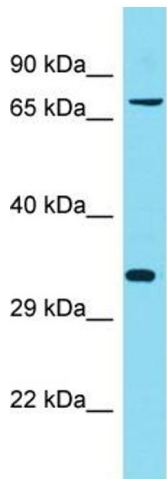
Preservative: Sodium azide

Precaution of Use: This product contains Sodium azide: a POISONOUS AND HAZARDOUS SUBSTANCE which should be handled by trained staff only.

Handling Advice: Avoid repeat freeze-thaw cycles.

Storage: -20 °C

Storage Comment: For short term use, store at 2-8°C up to 1 week. For long term storage, store at -20°C in small aliquots to prevent freeze-thaw cycles.



Host: Rabbit
Target Name: KIAA2013
Sample Tissue: Fetal Lung Lysate
Antibody Dilution: 1.0µg/ml

Western Blotting

Image 1. Host: Rabbit Target Name: KIAA2013 Sample
Tissue: Human Fetal Lung Antibody Dilution: 1ug/ml