

Datasheet for ABIN2791627
anti-Keratin 26 antibody (C-Term)[Go to Product page](#)

1 Image

Overview

Quantity:	100 µL
Target:	Keratin 26 (KRT26)
Binding Specificity:	C-Term
Reactivity:	Human, Rabbit
Host:	Rabbit
Clonality:	Polyclonal
Conjugate:	This Keratin 26 antibody is un-conjugated
Application:	Western Blotting (WB)

Product Details

Immunogen:	The immunogen is a synthetic peptide directed towards the C-terminal region of Human KRT26
Sequence:	IDIYCNLLDG EERKSKSTCY KSKGYRPVNS GNQAKDSTEE TIVKTVVEEL
Predicted Reactivity:	Human: 100%, Rabbit: 77%
Characteristics:	This is a rabbit polyclonal antibody against KRT26. It was validated on Western Blot.
Purification:	Affinity Purified

Target Details

Target:	Keratin 26 (KRT26)
Alternative Name:	KRT26 (KRT26 Products)
Background:	The protein encoded by this gene is a member of the keratin superfamily. This keratin protein is

Target Details

a type I keratin that is specific for the inner root sheath of the hair follicle. This gene exists in a cluster with other keratin genes on chromosome 17q21.

Alias Symbols: CK26, K25IRS2, K26, KRT25B

Protein Interaction Partner: UCHL5,

Protein Size: 468

Molecular Weight: 52 kDa

Gene ID: 353288

NCBI Accession: [NM_181539](#), [NP_853517](#)

UniProt: [Q7Z3Y9](#)

Application Details

Application Notes: Optimal working dilution should be determined by the investigator.

Restrictions: For Research Use only

Handling

Format: Liquid

Concentration: 1 mg/mL

Buffer: Liquid. Purified antibody supplied in 1x PBS buffer with 0.09 % (w/v) sodium azide and 2 % sucrose.

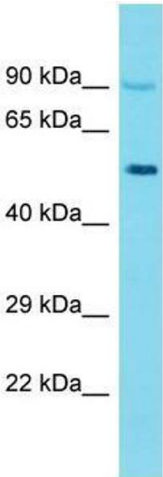
Preservative: Sodium azide

Precaution of Use: This product contains Sodium azide: a POISONOUS AND HAZARDOUS SUBSTANCE which should be handled by trained staff only.

Handling Advice: Avoid repeat freeze-thaw cycles.

Storage: -20 °C

Storage Comment: For short term use, store at 2-8°C up to 1 week. For long term storage, store at -20°C in small aliquots to prevent freeze-thaw cycles.



Western Blotting

Image 1.