

Datasheet for ABIN2791630
anti-Keratin 78 antibody (Middle Region)[Go to Product page](#)

1 Image

Overview

Quantity:	100 µL
Target:	Keratin 78 (KRT78)
Binding Specificity:	Middle Region
Reactivity:	Human, Cow, Dog, Guinea Pig, Mouse, Rabbit, Rat, Horse, Sheep
Host:	Rabbit
Clonality:	Polyclonal
Conjugate:	This Keratin 78 antibody is un-conjugated
Application:	Western Blotting (WB)

Product Details

Immunogen:	The immunogen is a synthetic peptide directed towards the middle region of Human KRT78
Sequence:	TQASDTSVVL SMDNNRYLDF SSIITEVRAR YEEIARSSKA EAEALYQTK
Predicted Reactivity:	Cow: 93%, Dog: 93%, Guinea Pig: 92%, Horse: 92%, Human: 100%, Mouse: 93%, Rabbit: 92%, Rat: 93%, Sheep: 92%
Characteristics:	This is a rabbit polyclonal antibody against KRT78. It was validated on Western Blot.
Purification:	Affinity Purified

Target Details

Target:	Keratin 78 (KRT78)
Alternative Name:	KRT78 (KRT78 Products)

Target Details

Background:	<p>This gene is a member of the type II keratin gene family and encodes a protein with an intermediate filament domain. Keratins are the major structural proteins in epithelial cells, forming a cytoplasmic network of 10 to 12 nm wide intermediate filaments and creating a scaffold that gives cells the ability to withstand mechanical and non-mechanical stresses. The genes of the type II keratin family are located as a gene cluster at 12p13.13. Four pseudogenes of this gene family have been identified.</p> <p>Protein Interaction Partner: MDM2, Nphp4, IQCB1, UBC, CRK, COPS5, CUL2, CUL3, UCHL5, SIRT2,</p> <p>Protein Size: 410</p>
-------------	--

Molecular Weight:	45 kDa
-------------------	--------

Gene ID:	196374
----------	--------

Application Details

Application Notes:	Optimal working dilution should be determined by the investigator.
--------------------	--

Restrictions:	For Research Use only
---------------	-----------------------

Handling

Format:	Liquid
---------	--------

Concentration:	1 mg/mL
----------------	---------

Buffer:	Liquid. Purified antibody supplied in 1x PBS buffer with 0.09 % (w/v) sodium azide and 2 % sucrose.
---------	---

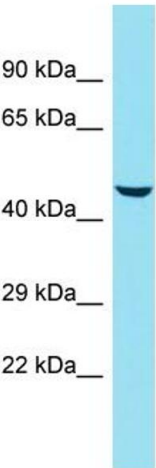
Preservative:	Sodium azide
---------------	--------------

Precaution of Use:	This product contains Sodium azide: a POISONOUS AND HAZARDOUS SUBSTANCE which should be handled by trained staff only.
--------------------	--

Handling Advice:	Avoid repeat freeze-thaw cycles.
------------------	----------------------------------

Storage:	-20 °C
----------	--------

Storage Comment:	For short term use, store at 2-8°C up to 1 week. For long term storage, store at -20°C in small aliquots to prevent freeze-thaw cycles.
------------------	---



Host: Rabbit
Target Name: KRT78
Sample Tissue: HepG2 Cell Lysate
Antibody Dilution: 1.0µg/ml

Western Blotting

Image 1. Host: Rabbit Target Name: KRT78 Sample

Tissue: Human HepG2 Whole Cell Antibody Dilution:

1ug/ml