

Datasheet for ABIN2791636
anti-LAGE3 antibody (N-Term)[Go to Product page](#)

1 Image

Overview

Quantity:	100 µL
Target:	LAGE3
Binding Specificity:	N-Term
Reactivity:	Human
Host:	Rabbit
Clonality:	Polyclonal
Conjugate:	This LAGE3 antibody is un-conjugated
Application:	Western Blotting (WB)

Product Details

Immunogen:	The immunogen is a synthetic peptide directed towards the N-terminal region of Human LAGE3
Sequence:	MRDADADAGG GADGGDGRGG HSCRGGVDTA AAPAGGAPPA HAPGPGRDAA
Predicted Reactivity:	Human: 100%
Characteristics:	This is a rabbit polyclonal antibody against LAGE3. It was validated on Western Blot.
Purification:	Affinity Purified

Target Details

Target:	LAGE3
Alternative Name:	LAGE3 (LAGE3 Products)
Background:	This gene belongs to the ESO/LAGE gene family, members of which are clustered together on

Target Details

chromosome Xq28, and have similar exon-intron structures. Unlike the other family members which are normally expressed only in testis and activated in a wide range of human tumors, this gene is ubiquitously expressed in somatic tissues. The latter, combined with the finding that it is highly conserved in mouse and rat, suggests that the encoded protein is functionally important. An intronless pseudogene with high sequence similarity to this gene is located on chromosome 9.

Alias Symbols: CVG5, DXS9879E, DXS9951E, ES03, ITBA2

Protein Interaction Partner: KRT40, PDE9A, UBC, CNN2, TP53RK, VCPKMT, RNF114, RPAP1, PTPN23, SEPHS2, OGFR, MAGED2, AHCYL1, SSSCA1, USP34, PUM1, SNRPF, RAB5B, PTMS, PLP2, MT1A, RNF214, TOM1L2, MCFD2, ZFYVE19, GINS4, NDRG3, C14orf142, CAND1, OSGEP, TPRKB, PRAME, CUL2, TCEB2, TCEB1,

Protein Size: 143

Molecular Weight:	14 kDa
-------------------	--------

Gene ID:	8270
----------	------

NCBI Accession:	NM_006014 , NP_006005
-----------------	---

UniProt:	Q14657
----------	------------------------

Application Details

Application Notes:	Optimal working dilution should be determined by the investigator.
--------------------	--

Restrictions:	For Research Use only
---------------	-----------------------

Handling

Format:	Liquid
---------	--------

Concentration:	1 mg/mL
----------------	---------

Buffer:	Liquid. Purified antibody supplied in 1x PBS buffer with 0.09 % (w/v) sodium azide and 2 % sucrose.
---------	---

Preservative:	Sodium azide
---------------	--------------

Precaution of Use:	This product contains Sodium azide: a POISONOUS AND HAZARDOUS SUBSTANCE which should be handled by trained staff only.
--------------------	--

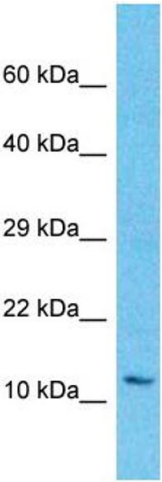
Handling Advice:	Avoid repeat freeze-thaw cycles.
------------------	----------------------------------

Storage:	-20 °C
----------	--------

Handling

Storage Comment: For short term use, store at 2-8°C up to 1 week. For long term storage, store at -20°C in small aliquots to prevent freeze-thaw cycles.

Images



Western Blotting

Image 1. Host: Rabbit Target Name: LAGE3 Sample Type: HeLa Whole Cell lysates Antibody Dilution: 1.0ug/ml LAGE3 is supported by BioGPS gene expression data to be expressed in HeLa