

Datasheet for ABIN2791638
anti-Leng1 antibody (C-Term)[Go to Product page](#)

1 Image

Overview

Quantity:	100 µL
Target:	Leng1
Binding Specificity:	C-Term
Reactivity:	Human, Horse
Host:	Rabbit
Clonality:	Polyclonal
Conjugate:	This Leng1 antibody is un-conjugated
Application:	Western Blotting (WB)

Product Details

Immunogen:	The immunogen is a synthetic peptide directed towards the C-terminal region of Human LENG1
Sequence:	GDEGSRSRKE KEGSEKQRPK EPPSLDQLRA ERLRREAAER SRAEALLARV
Predicted Reactivity:	Horse: 92%, Human: 100%
Characteristics:	This is a rabbit polyclonal antibody against LENG1. It was validated on Western Blot.
Purification:	Affinity Purified

Target Details

Target:	Leng1
Alternative Name:	LENG1 (Leng1 Products)
Background:	The function of this protein remains unknown.

Target Details

Alias Symbols: -

Protein Interaction Partner: TMEM239, CEP57L1, CCDC57, SPERT, CCDC155, KRT40, FSD2, USHBP1, CEP70, CCDC102B, CCDC136, CARD9, TRIM54, PAK7, BANP, ROPN1, NECAB2, TFIP11, LDOC1, MTUS2, MID2, CALCOCO2, PDE4DIP, STX11, TCF4, TRIM27, NAB2, KRT31, KIFC3, GOLGA2, CDR2, UBC, APP, OSGEP, NAGK,

Protein Size: 264

Molecular Weight: 30 kDa

Gene ID: 79165

NCBI Accession: [NM_024316](#), [NP_077292](#)

UniProt: [Q96BZ8](#)

Application Details

Application Notes: Optimal working dilution should be determined by the investigator.

Restrictions: For Research Use only

Handling

Format: Liquid

Concentration: 1 mg/mL

Buffer: Liquid. Purified antibody supplied in 1x PBS buffer with 0.09 % (w/v) sodium azide and 2 % sucrose.

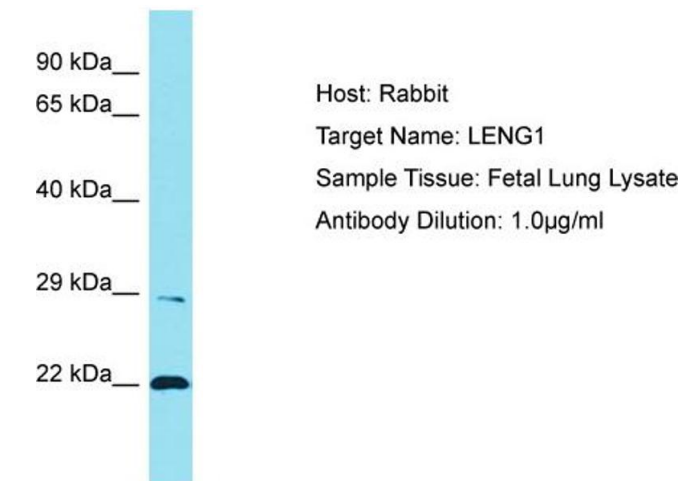
Preservative: Sodium azide

Precaution of Use: This product contains Sodium azide: a POISONOUS AND HAZARDOUS SUBSTANCE which should be handled by trained staff only.

Handling Advice: Avoid repeat freeze-thaw cycles.

Storage: -20 °C

Storage Comment: For short term use, store at 2-8°C up to 1 week. For long term storage, store at -20°C in small aliquots to prevent freeze-thaw cycles.



Western Blotting

Image 1. Host: Rabbit Target Name: LENG1 Sample
Tissue: Human Fetal Lung Antibody Dilution: 1ug/ml