



[Go to Product page](#)

Datasheet for ABIN2791647
anti-LRRC10B antibody (C-Term)

1 Image

Overview

Quantity:	100 µL
Target:	LRRC10B
Binding Specificity:	C-Term
Reactivity:	Human, Mouse, Rabbit, Rat, Cow, Dog, Guinea Pig, Horse
Host:	Rabbit
Clonality:	Polyclonal
Conjugate:	This LRRC10B antibody is un-conjugated
Application:	Western Blotting (WB)

Product Details

Immunogen:	The immunogen is a synthetic peptide directed towards the C-terminal region of Human LRRC10B
Sequence:	VTGPPRVADT VFLVGEGAVE RMAERDEPTP RPPRRRPARA FEDEEEEDLL
Predicted Reactivity:	Cow: 100%, Dog: 100%, Guinea Pig: 100%, Horse: 100%, Human: 100%, Mouse: 93%, Rabbit: 100%, Rat: 93%
Characteristics:	This is a rabbit polyclonal antibody against LRRC10B. It was validated on Western Blot.
Purification:	Affinity Purified

Target Details

Target:	LRRC10B
---------	---------

Target Details

Alternative Name: [LRRC10B \(LRRC10B Products\)](#)

Background: The function of this protein remains unknown.
Alias Symbols: -
Protein Size: 292

Molecular Weight: 32 kDa

Gene ID: 390205

NCBI Accession: [NM_001145077](#), [NP_001138549](#)

UniProt: [A6NIK2](#)

Application Details

Restrictions: For Research Use only

Handling

Format: Liquid

Concentration: 1 mg/mL

Buffer: Liquid. Purified antibody supplied in 1x PBS buffer with 0.09 % (w/v) sodium azide and 2 % sucrose.

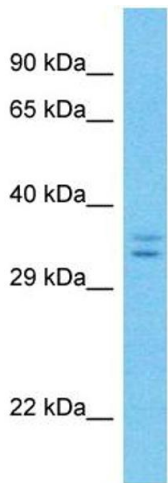
Preservative: Sodium azide

Precaution of Use: This product contains Sodium azide: a POISONOUS AND HAZARDOUS SUBSTANCE which should be handled by trained staff only.

Handling Advice: Avoid repeat freeze-thaw cycles.

Storage: -20 °C

Storage Comment: For short term use, store at 2-8°C up to 1 week. For long term storage, store at -20°C in small aliquots to prevent freeze-thaw cycles.



Host: Rabbit
Target Name: LRRC10B
Sample Tissue: Hela Cell Lysate
Antibody Dilution: 1.0µg/ml

Western Blotting

Image 1. Host: Rabbit Target Name: LRRC10B Sample Type: Hela Whole Cell lysates Antibody Dilution: 1.0ug/ml