

Datasheet for ABIN2791650
anti-LRRC37A antibody (C-Term)



[Go to Product page](#)

1 Image

Overview

Quantity:	100 µL
Target:	LRRC37A
Binding Specificity:	C-Term
Reactivity:	Human
Host:	Rabbit
Clonality:	Polyclonal
Conjugate:	This LRRC37A antibody is un-conjugated
Application:	Western Blotting (WB)

Product Details

Immunogen:	The immunogen is a synthetic peptide directed towards the C-terminal region of human LRRC37A2
Sequence:	RESQDGLSSF GQPLWFKDLY KPLSATRINN HAWKLHKKSS NEDKILNRDP
Predicted Reactivity:	Human: 100%
Characteristics:	This is a rabbit polyclonal antibody against LRRC37A. It was validated on Western Blot.
Purification:	Affinity Purified

Target Details

Target:	LRRC37A
Alternative Name:	LRRC37A (LRRC37A Products)

Target Details

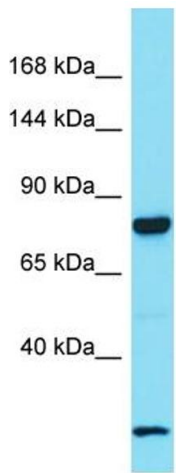
Background:	Alias Symbols: LRRRC37 Protein Size: 738
Molecular Weight:	81 kDa
Gene ID:	474170
NCBI Accession:	NM_001006607 , NP_001006608
UniProt:	A6NM11

Application Details

Restrictions:	For Research Use only
---------------	-----------------------

Handling

Format:	Liquid
Concentration:	1 mg/mL
Buffer:	Liquid. Purified antibody supplied in 1x PBS buffer with 0.09 % (w/v) sodium azide and 2 % sucrose.
Preservative:	Sodium azide
Precaution of Use:	This product contains Sodium azide: a POISONOUS AND HAZARDOUS SUBSTANCE which should be handled by trained staff only.
Handling Advice:	Avoid repeat freeze-thaw cycles.
Storage:	-20 °C
Storage Comment:	For short term use, store at 2-8°C up to 1 week. For long term storage, store at -20°C in small aliquots to prevent freeze-thaw cycles.



Host: Rabbit
Target Name: LRRC37A
Sample Tissue: Fetal Lung Lysate
Antibody Dilution: 1.0µg/ml

Western Blotting

Image 1. Host: Rabbit Target Name: LRRC37A2 Sample
Tissue: Human Fetal Lung Antibody Dilution: 1ug/ml