



## Datasheet for ABIN2791654 **anti-PPP1R37 antibody (C-Term)**



[Go to Product page](#)

### 1 Image

#### Overview

Quantity:	100 µL
Target:	PPP1R37
Binding Specificity:	C-Term
Reactivity:	Human, Cow, Dog, Horse, Rat
Host:	Rabbit
Clonality:	Polyclonal
Conjugate:	This PPP1R37 antibody is un-conjugated
Application:	Western Blotting (WB)

#### Product Details

Immunogen:	The immunogen is a synthetic peptide directed towards the C-terminal region of Human PPP1R37
Sequence:	PPLPGLKPE FALALPPEPP PGPEVKGGSC GLEHELSCSK NEKELEELL
Predicted Reactivity:	Cow: 100%, Dog: 100%, Horse: 100%, Human: 100%, Rat: 93%
Characteristics:	This is a rabbit polyclonal antibody against PPP1R37. It was validated on Western Blot.
Purification:	Affinity Purified

#### Target Details

Target:	PPP1R37
Alternative Name:	PPP1R37 ( <a href="#">PPP1R37 Products</a> )

## Target Details

---

Background: The function of this protein remains unknown.  
Alias Symbols: LRRC68  
Protein Interaction Partner: PPP1CA, BEND7, ZMYND19,  
Protein Size: 625

---

Molecular Weight: 68 kDa

---

Gene ID: 284352

---

NCBI Accession: [XM\\_001723010](#), [XP\\_001723062](#)

---

## Application Details

---

Application Notes: Optimal working dilution should be determined by the investigator.

---

Restrictions: For Research Use only

---

## Handling

---

Format: Liquid

---

Concentration: 1 mg/mL

---

Buffer: Liquid. Purified antibody supplied in 1x PBS buffer with 0.09 % (w/v) sodium azide and 2 % sucrose.

---

Preservative: Sodium azide

---

Precaution of Use: This product contains Sodium azide: a POISONOUS AND HAZARDOUS SUBSTANCE which should be handled by trained staff only.

---

Handling Advice: Avoid repeat freeze-thaw cycles.

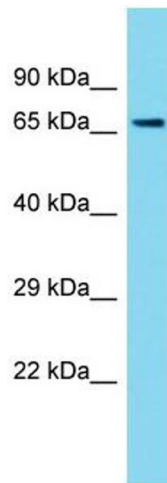
---

Storage: -20 °C

---

Storage Comment: For short term use, store at 2-8°C up to 1 week. For long term storage, store at -20°C in small aliquots to prevent freeze-thaw cycles.

---



### Western Blotting

Image 1.