



[Go to Product page](#)

Datasheet for ABIN2791657

anti-MAGEC3 antibody (C-Term)

1 Image

Overview

Quantity:	100 µL
Target:	MAGEC3
Binding Specificity:	C-Term
Reactivity:	Human
Host:	Rabbit
Clonality:	Polyclonal
Conjugate:	This MAGEC3 antibody is un-conjugated
Application:	Western Blotting (WB)

Product Details

Immunogen:	The immunogen is a synthetic peptide directed towards the C-terminal region of Human MAGEC3
Sequence:	RGLTEASPQQ KKGGEDEDMP AAGMPPLPQS PPEIPPQGPP KISPQGPPQS
Predicted Reactivity:	Human: 100%
Characteristics:	This is a rabbit polyclonal antibody against MAGEC3. It was validated on Western Blot.
Purification:	Affinity Purified

Target Details

Target:	MAGEC3
Alternative Name:	MAGEC3 (MAGEC3 Products)

Target Details

Background: This gene is a member of the MAGEC gene family. The members of this family are not expressed in normal tissues, except for testis, and are expressed in tumors of various histological types. The MAGEC genes are clustered on chromosome Xq26-q27. Two transcript variants encoding distinct isoforms have been found for this gene.

Protein Size: 643

Molecular Weight: 72 kDa

Gene ID: 139081

UniProt: [Q8TD91](#)

Application Details

Restrictions: For Research Use only

Handling

Format: Liquid

Concentration: 1 mg/mL

Buffer: Liquid. Purified antibody supplied in 1x PBS buffer with 0.09 % (w/v) sodium azide and 2 % sucrose.

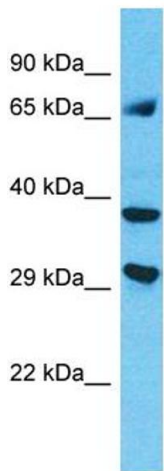
Preservative: Sodium azide

Precaution of Use: This product contains Sodium azide: a POISONOUS AND HAZARDOUS SUBSTANCE which should be handled by trained staff only.

Handling Advice: Avoid repeat freeze-thaw cycles.

Storage: -20 °C

Storage Comment: For short term use, store at 2-8°C up to 1 week. For long term storage, store at -20°C in small aliquots to prevent freeze-thaw cycles.



Host: Rabbit
Target Name: MAGEC3
Sample Tissue: HepG2 Cell Lysate
Antibody Dilution: 1.0µg/ml

Western Blotting

Image 1. Host: Rabbit Target Name: MAGEC3 Sample Type: HepG2 Whole Cell lysates Antibody Dilution: 1.0ug/ml MAGEC3 is supported by BioGPS gene expression data to be expressed in HepG2