



[Go to Product page](#)

Datasheet for ABIN2791660
anti-SFR1 antibody (C-Term)

1 Image

Overview

Quantity:	100 µL
Target:	SFR1
Binding Specificity:	C-Term
Reactivity:	Human, Pig, Rat, Cow, Dog, Horse, Rabbit, Guinea Pig
Host:	Rabbit
Clonality:	Polyclonal
Conjugate:	This SFR1 antibody is un-conjugated
Application:	Western Blotting (WB)

Product Details

Immunogen:	The immunogen is a synthetic peptide directed towards the C-terminal region of Human SFR1
Sequence:	LLIKKWRSCS QLLLYELQSA VSEENKKLSL TQLIDHYGLD DKLLHYNRSE
Predicted Reactivity:	Cow: 93%, Dog: 93%, Guinea Pig: 86%, Horse: 93%, Human: 100%, Pig: 93%, Rabbit: 86%, Rat: 92%
Characteristics:	This is a rabbit polyclonal antibody against SFR1. It was validated on Western Blot.
Purification:	Affinity Purified

Target Details

Target:	SFR1
Alternative Name:	SFR1 (SFR1 Products)

Target Details

Background: SFR1 is a component of the SWI5-SFR1 complex, a complex required for double-strand break repair via homologous recombination.

Alias Symbols: C10orf78, MEI5, MEIR5, bA373N18.1

Protein Interaction Partner: MRFAP1L1, CEP70, HMBOX1, RINT1, TFIP11, NDC80, RNF40, NMI, SWI5, RAD51, UBC, DTNBP1, EXOC1, TRAF3IP1, CDC5L,

Protein Size: 232

Molecular Weight: 26 kDa

Gene ID: 119392

NCBI Accession: [NM_145247](#), [NP_660290](#)

Application Details

Application Notes: Optimal working dilution should be determined by the investigator.

Restrictions: For Research Use only

Handling

Format: Liquid

Concentration: 1 mg/mL

Buffer: Liquid. Purified antibody supplied in 1x PBS buffer with 0.09 % (w/v) sodium azide and 2 % sucrose.

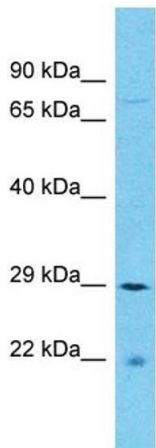
Preservative: Sodium azide

Precaution of Use: This product contains Sodium azide: a POISONOUS AND HAZARDOUS SUBSTANCE which should be handled by trained staff only.

Handling Advice: Avoid repeat freeze-thaw cycles.

Storage: -20 °C

Storage Comment: For short term use, store at 2-8°C up to 1 week. For long term storage, store at -20°C in small aliquots to prevent freeze-thaw cycles.



Host: Rabbit
Target Name: SFR1
Sample Tissue: COLO205 Cell Lysate
Antibody Dilution: 1.0µg/ml

Western Blotting

Image 1. Host: Rabbit Target Name: SFR1 Sample Type: COLO205 Whole Cell lysates Antibody Dilution: 1.0ug/ml