

Datasheet for ABIN2791661
anti-SFR1 antibody (N-Term)[Go to Product page](#)

1 Image

Overview

Quantity:	100 µL
Target:	SFR1
Binding Specificity:	N-Term
Reactivity:	Human, Pig, Rat, Cow, Dog
Host:	Rabbit
Clonality:	Polyclonal
Conjugate:	This SFR1 antibody is un-conjugated
Application:	Western Blotting (WB)

Product Details

Immunogen:	The immunogen is a synthetic peptide directed towards the N-terminal region of Human SFR1
Sequence:	NSSRKQPMSA TLRERLRKTR FSFNSSYNVV KRLKVESEEN DQTFSEKPAS
Predicted Reactivity:	Cow: 100%, Dog: 85%, Human: 100%, Pig: 100%, Rat: 85%
Characteristics:	This is a rabbit polyclonal antibody against SFR1. It was validated on Western Blot.
Purification:	Affinity Purified

Target Details

Target:	SFR1
Alternative Name:	SFR1 (SFR1 Products)
Background:	SFR1 is a component of the SWI5-SFR1 complex, a complex required for double-strand break

Target Details

repair via homologous recombination.

Protein Interaction Partner: MRFAP1L1, CEP70, HMBOX1, RINT1, TFIP11, NDC80, RNF40, NMI, SWI5, RAD51, UBC, DTNBP1, EXOC1, TRAF3IP1, CDC5L,

Protein Size: 307

Molecular Weight: 33 kDa

Gene ID: 119392

Application Details

Application Notes: Optimal working dilution should be determined by the investigator.

Restrictions: For Research Use only

Handling

Format: Liquid

Concentration: 1 mg/mL

Buffer: Liquid. Purified antibody supplied in 1x PBS buffer with 0.09 % (w/v) sodium azide and 2 % sucrose.

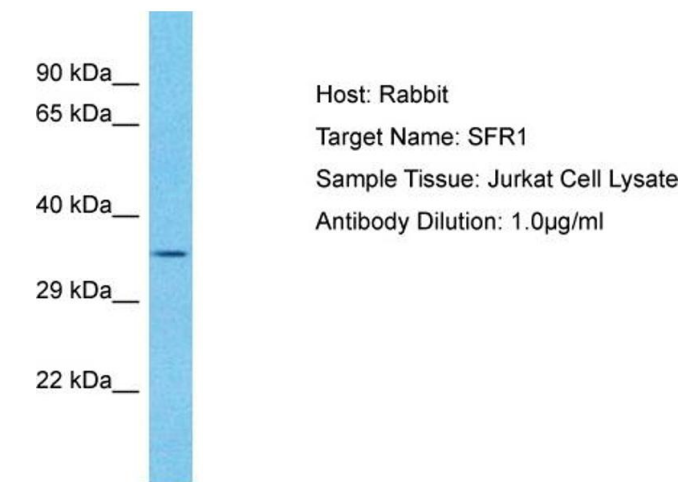
Preservative: Sodium azide

Precaution of Use: This product contains Sodium azide: a POISONOUS AND HAZARDOUS SUBSTANCE which should be handled by trained staff only.

Handling Advice: Avoid repeat freeze-thaw cycles.

Storage: -20 °C

Storage Comment: For short term use, store at 2-8°C up to 1 week. For long term storage, store at -20°C in small aliquots to prevent freeze-thaw cycles.



Western Blotting

Image 1. Host: Rabbit Target Name: SFR1 Sample Type: Jurkat Whole Cell lysates Antibody Dilution: 1.0ug/ml