

Datasheet for ABIN2791664
anti-MOBKL2C antibody (Middle Region)[Go to Product page](#)

1 Image

Overview

Quantity:	100 µL
Target:	MOBKL2C
Binding Specificity:	Middle Region
Reactivity:	Human, Mouse, Rat, Cow, Horse, Pig, Rabbit, Dog, Guinea Pig
Host:	Rabbit
Clonality:	Polyclonal
Conjugate:	This MOBKL2C antibody is un-conjugated
Application:	Western Blotting (WB)

Product Details

Immunogen:	The immunogen is a synthetic peptide directed towards the middle region of Human MOB3C
Sequence:	MAGGPRYEYR WQDERQYRRP AKLSAPRYMA LLMDWIEGLI NDEEVFPTRV
Predicted Reactivity:	Cow: 100%, Dog: 100%, Guinea Pig: 93%, Horse: 100%, Human: 100%, Mouse: 100%, Pig: 100%, Rabbit: 100%, Rat: 100%
Characteristics:	This is a rabbit polyclonal antibody against MOB3C. It was validated on Western Blot.
Purification:	Affinity Purified

Target Details

Target:	MOBKL2C
Alternative Name:	MOB3C (MOBKL2C Products)

Target Details

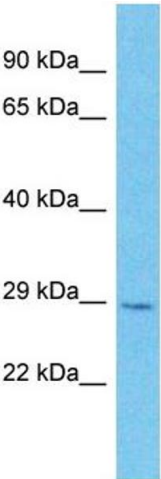
Background:	<p>The protein encoded by this gene is similar to the yeast Mob1 protein. Yeast Mob1 binds Mps1p, a protein kinase essential for spindle pole body duplication and mitotic checkpoint regulation. Alternatively spliced transcript variants encoding distinct isoforms have been observed.</p> <p>Alias Symbols: MOB1E, MOBKL2C</p> <p>Protein Interaction Partner: KRT40, CMTM3, ZBTB10, FAM118A, NT5C2, TNIP1, TFCP2, TD02, SIAH1, APP, LATS2, LATS1,</p> <p>Protein Size: 216</p>
Molecular Weight:	25 kDa
Gene ID:	148932
NCBI Accession:	NM_201403 , NP_958805
UniProt:	Q70IA8

Application Details

Restrictions:	For Research Use only
---------------	-----------------------

Handling

Format:	Liquid
Concentration:	1 mg/mL
Buffer:	Liquid. Purified antibody supplied in 1x PBS buffer with 0.09 % (w/v) sodium azide and 2 % sucrose.
Preservative:	Sodium azide
Precaution of Use:	This product contains Sodium azide: a POISONOUS AND HAZARDOUS SUBSTANCE which should be handled by trained staff only.
Handling Advice:	Avoid repeat freeze-thaw cycles.
Storage:	-20 °C
Storage Comment:	For short term use, store at 2-8°C up to 1 week. For long term storage, store at -20°C in small aliquots to prevent freeze-thaw cycles.



Western Blotting

Image 1.