

Datasheet for ABIN2791669  
**anti-MRPL18 antibody (N-Term)**[Go to Product page](#)

## 1 Image

## Overview

Quantity:	100 µL
Target:	MRPL18
Binding Specificity:	N-Term
Reactivity:	Human, Dog, Rabbit, Rat
Host:	Rabbit
Clonality:	Polyclonal
Conjugate:	This MRPL18 antibody is un-conjugated
Application:	Western Blotting (WB)

## Product Details

Immunogen:	The immunogen is a synthetic peptide directed towards the N-terminal region of Human MRPL18
Sequence:	RNPGCRFAAL STSSEPAAKP EVDPVENEAV APEFTNRNPR NLELLSVARK
Predicted Reactivity:	Dog: 93%, Human: 100%, Rabbit: 79%, Rat: 92%
Characteristics:	This is a rabbit polyclonal antibody against MRPL18. It was validated on Western Blot.
Purification:	Affinity Purified

## Target Details

Target:	MRPL18
Alternative Name:	MRPL18 ( <a href="#">MRPL18 Products</a> )

## Target Details

Background:	<p>Mammalian mitochondrial ribosomal proteins are encoded by nuclear genes and help in protein synthesis within the mitochondrion. Mitochondrial ribosomes (mitoribosomes) consist of a small 28S subunit and a large 39S subunit. They have an estimated 75 % protein to rRNA composition compared to prokaryotic ribosomes, where this ratio is reversed. Another difference between mammalian mitoribosomes and prokaryotic ribosomes is that the latter contain a 5S rRNA. Among different species, the proteins comprising the mitoribosome differ greatly in sequence, and sometimes in biochemical properties, which prevents easy recognition by sequence homology. This gene encodes a 39S subunit protein that belongs to the L18P ribosomal protein family. Three polymorphic sites exist in this gene, one of which is three nt in length which causes an extra aa near the N-terminus.</p> <p>Alias Symbols: L18mt, MRP-L18</p> <p>Protein Interaction Partner: NPM1, C1QBP, UBC, Ybx1, ICT1,</p> <p>Protein Size: 180</p>
-------------	---

Molecular Weight:	20 kDa
-------------------	--------

Gene ID:	29074
----------	-------

NCBI Accession:	<a href="#">NM_014161</a> , <a href="#">NP_054880</a>
-----------------	---

UniProt:	<a href="#">Q9H0U6</a>
----------	------------------------

## Application Details

Restrictions:	For Research Use only
---------------	-----------------------

## Handling

Format:	Liquid
---------	--------

Concentration:	1 mg/mL
----------------	---------

Buffer:	Liquid. Purified antibody supplied in 1x PBS buffer with 0.09 % (w/v) sodium azide and 2 % sucrose.
---------	---

Preservative:	Sodium azide
---------------	--------------

Precaution of Use:	This product contains Sodium azide: a POISONOUS AND HAZARDOUS SUBSTANCE which should be handled by trained staff only.
--------------------	--

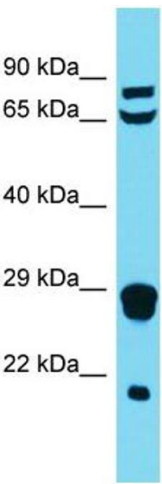
Handling Advice:	Avoid repeat freeze-thaw cycles.
------------------	----------------------------------

Storage:	-20 °C
----------	--------

Handling

Storage Comment: For short term use, store at 2-8°C up to 1 week. For long term storage, store at -20°C in small aliquots to prevent freeze-thaw cycles.

Images



**Western Blotting**

**Image 1.**