



[Go to Product page](#)

Datasheet for ABIN2791670
anti-MRPL30 antibody (C-Term)

1 Image

Overview

Quantity:	100 µL
Target:	MRPL30
Binding Specificity:	C-Term
Reactivity:	Human, Mouse, Rat, Dog, Rabbit
Host:	Rabbit
Clonality:	Polyclonal
Conjugate:	This MRPL30 antibody is un-conjugated
Application:	Western Blotting (WB)

Product Details

Immunogen:	The immunogen is a synthetic peptide directed towards the C-terminal region of Human MRPL30
Sequence:	VVKHLIRIKP LKLPQGLPAE ENMSNTCLKS TGELVVQWHL KPVEQKAHES
Predicted Reactivity:	Dog: 80%, Human: 100%, Mouse: 91%, Rabbit: 89%, Rat: 91%
Characteristics:	This is a rabbit polyclonal antibody against MRPL30. It was validated on Western Blot.
Purification:	Affinity Purified

Target Details

Target:	MRPL30
Alternative Name:	MRPL30 (MRPL30 Products)

Target Details

Background: Mammalian mitochondrial ribosomal proteins are encoded by nuclear genes and help in protein synthesis within the mitochondrion. Mitochondrial ribosomes (mitoribosomes) consist of a small 28S subunit and a large 39S subunit. They have an estimated 75 % protein to rRNA composition compared to prokaryotic ribosomes, where this ratio is reversed. Another difference between mammalian mitoribosomes and prokaryotic ribosomes is that the latter contain a 5S rRNA. Among different species, the proteins comprising the mitoribosome differ greatly in sequence, and sometimes in biochemical properties, which prevents easy recognition by sequence homology. This gene encodes a 39S subunit protein. Alternative splicing results in multiple transcript variants. Pseudogenes corresponding to this gene are found on chromosomes 6p and 12p. Read-through transcription also exists between this gene and the neighboring upstream lipoyltransferase 1 (LIPT1) gene.

Alias Symbols: L28MT, L30MT, MRP-L28, MRP-L30, MRPL28, MRPL28M, RPML28
Protein Interaction Partner: MARCKSL1, PLP2, SLC25A3, UBC,
Protein Size: 161

Molecular Weight: 14 kDa

Gene ID: 51263

NCBI Accession: [NM_145212](#), [NP_660213](#)

UniProt: [Q8TCC3](#)

Application Details

Restrictions: For Research Use only

Handling

Format: Liquid

Concentration: 1 mg/mL

Buffer: Liquid. Purified antibody supplied in 1x PBS buffer with 0.09 % (w/v) sodium azide and 2 % sucrose.

Preservative: Sodium azide

Precaution of Use: This product contains Sodium azide: a POISONOUS AND HAZARDOUS SUBSTANCE which should be handled by trained staff only.

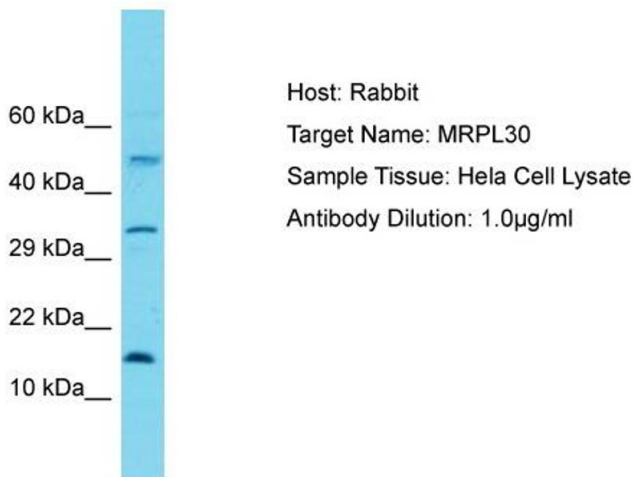
Handling Advice: Avoid repeat freeze-thaw cycles.

Handling

Storage: -20 °C

Storage Comment: For short term use, store at 2-8°C up to 1 week. For long term storage, store at -20°C in small aliquots to prevent freeze-thaw cycles.

Images



Western Blotting

Image 1. Host: Rabbit Target Name: MRPL30 Sample Tissue: Human HeLa Whole Cell Antibody Dilution: 1ug/ml