



[Go to Product page](#)

Datasheet for ABIN2791671

anti-MRPL52 antibody (N-Term)

1 Image

Overview

Quantity:	100 µL
Target:	MRPL52
Binding Specificity:	N-Term
Reactivity:	Human, Mouse, Rat, Cow, Dog, Horse, Pig, Rabbit
Host:	Rabbit
Clonality:	Polyclonal
Conjugate:	This MRPL52 antibody is un-conjugated
Application:	Western Blotting (WB)

Product Details

Immunogen:	The immunogen is a synthetic peptide directed towards the N-terminal region of Human MRPL52
Sequence:	MKGQLRRKAE RETFARRVVL LSQEMDAGLQ AWQLRQQKLQ EEQRKQENAL
Predicted Reactivity:	Cow: 86%, Dog: 86%, Horse: 79%, Human: 100%, Mouse: 91%, Pig: 86%, Rabbit: 86%, Rat: 91%
Characteristics:	This is a rabbit polyclonal antibody against MRPL52. It was validated on Western Blot.
Purification:	Affinity Purified

Target Details

Target:	MRPL52
Alternative Name:	MRPL52 (MRPL52 Products)

Target Details

Background: Mammalian mitochondrial ribosomal proteins are encoded by nuclear genes and help in protein synthesis within the mitochondrion. Mitochondrial ribosomes (mitoribosomes) consist of a small 28S subunit and a large 39S subunit. They have an estimated 75 % protein to rRNA composition compared to prokaryotic ribosomes, where this ratio is reversed. Another difference between mammalian mitoribosomes and prokaryotic ribosomes is that the latter contain a 5S rRNA. Among different species, the proteins comprising the mitoribosome differ greatly in sequence, and sometimes in biochemical properties, which prevents easy recognition by sequence homology. This gene encodes a 39S subunit protein which has no bacterial homolog. Multiple transcript variants encoding different protein isoforms were identified through sequence analysis.

Protein Interaction Partner: UBC, NPM1, MRPL41, DDX28, TSR1, MRPL39, MRPL51, MRPL13, ERLEC1, MRPL3, CUL7, RPS18, MRPL12, MRPL23, ICT1, HNRNPU, MRPL49, APP, MRPL55, TMEM177, MRPL32, MRPL38, MRPL40,

Protein Size: 64

Molecular Weight: 7 kDa

Gene ID: 122704

Application Details

Restrictions: For Research Use only

Handling

Format: Liquid

Concentration: 1 mg/mL

Buffer: Liquid. Purified antibody supplied in 1x PBS buffer with 0.09 % (w/v) sodium azide and 2 % sucrose.

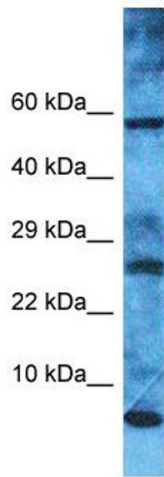
Preservative: Sodium azide

Precaution of Use: This product contains Sodium azide: a POISONOUS AND HAZARDOUS SUBSTANCE which should be handled by trained staff only.

Handling Advice: Avoid repeat freeze-thaw cycles.

Storage: -20 °C

Storage Comment: For short term use, store at 2-8°C up to 1 week. For long term storage, store at -20°C in small aliquots to prevent freeze-thaw cycles.



Western Blotting

Image 1.