



[Go to Product page](#)

Datasheet for ABIN2791672
anti-MRPS5 antibody (N-Term)

1 Image

Overview

Quantity:	100 µL
Target:	MRPS5
Binding Specificity:	N-Term
Reactivity:	Human, Mouse, Rat, Rabbit, Cow, Dog, Guinea Pig, Horse, Zebrafish (Danio rerio)
Host:	Rabbit
Clonality:	Polyclonal
Conjugate:	This MRPS5 antibody is un-conjugated
Application:	Western Blotting (WB)

Product Details

Immunogen:	The immunogen is a synthetic peptide directed towards the N-terminal region of Human MRPS5
Sequence:	ETGAGAKKGR GKRTKKKKRK DLNRGQIIGE GRYGFLWPGL NVPLMKNGAV
Predicted Reactivity:	Cow: 93%, Dog: 86%, Guinea Pig: 92%, Horse: 93%, Human: 100%, Mouse: 93%, Rabbit: 93%, Rat: 93%, Zebrafish: 86%
Characteristics:	This is a rabbit polyclonal antibody against MRPS5. It was validated on Western Blot.
Purification:	Affinity Purified

Target Details

Target:	MRPS5
---------	-------

Target Details

Alternative Name: [MRPS5 \(MRPS5 Products\)](#)

Background: Mammalian mitochondrial ribosomal proteins are encoded by nuclear genes and help in protein synthesis within the mitochondrion. Mitochondrial ribosomes (mitoribosomes) consist of a small 28S subunit and a large 39S subunit. They have an estimated 75 % protein to rRNA composition compared to prokaryotic ribosomes, where this ratio is reversed. Another difference between mammalian mitoribosomes and prokaryotic ribosomes is that the latter contain a 5S rRNA. Among different species, the proteins comprising the mitoribosome differ greatly in sequence, and sometimes in biochemical properties, which prevents easy recognition by sequence homology. This gene encodes a 28S subunit protein that belongs to the ribosomal protein S5P family. Pseudogenes corresponding to this gene are found on chromosomes 4q, 5q, and 18q.

Alias Symbols: MRP-S5, S5mt

Protein Interaction Partner: TP53, SUMO2, UBC, C1QBP, MRPL24, TMEM43, MRPS35, MRPS10, ZMPSTE24, FLOT1, UQCRFS1P1, TUFM, SDHB, ILF3, GALNT2, EEF2, CORO1C, CAND1, CUL3, ICT1, DDX56,

Protein Size: 430

Molecular Weight: 47 kDa

Gene ID: 64969

NCBI Accession: [NM_031902, NP_114108](#)

UniProt: [P82675](#)

Pathways: [SARS-CoV-2 Protein Interactome](#)

Application Details

Restrictions: For Research Use only

Handling

Format: Liquid

Concentration: 1 mg/mL

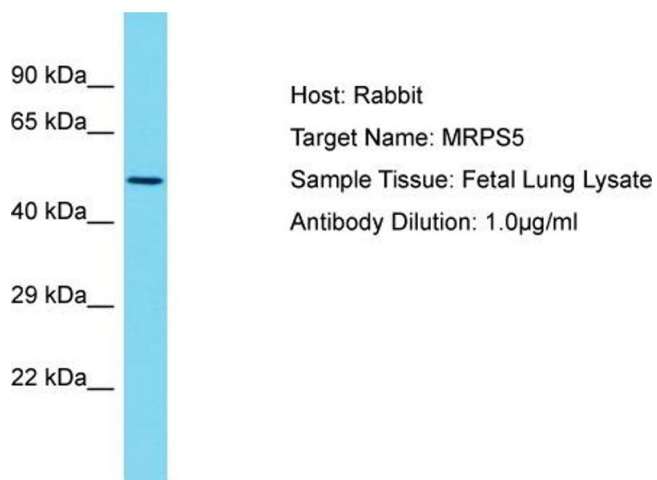
Buffer: Liquid. Purified antibody supplied in 1x PBS buffer with 0.09 % (w/v) sodium azide and 2 % sucrose.

Preservative: Sodium azide

Handling

Precaution of Use:	This product contains Sodium azide: a POISONOUS AND HAZARDOUS SUBSTANCE which should be handled by trained staff only.
Handling Advice:	Avoid repeat freeze-thaw cycles.
Storage:	-20 °C
Storage Comment:	For short term use, store at 2-8°C up to 1 week. For long term storage, store at -20°C in small aliquots to prevent freeze-thaw cycles.

Images



Western Blotting

Image 1. Host: Rabbit Target Name: MRPS5 Sample Type: Fetal Lung lysates Antibody Dilution: 1.0ug/ml