

Datasheet for ABIN2791676  
**anti-MRPS25 antibody (C-Term)**



[Go to Product page](#)

1 Image

## Overview

Quantity:	100 µL
Target:	MRPS25
Binding Specificity:	C-Term
Reactivity:	Human, Horse, Rabbit
Host:	Rabbit
Clonality:	Polyclonal
Conjugate:	This MRPS25 antibody is un-conjugated
Application:	Western Blotting (WB)

## Product Details

Immunogen:	The immunogen is a synthetic peptide directed towards the C-terminal region of Human MRPS25
Sequence:	SHPANFGPRK YCLRECICEV EGQVPCPSLV PLPKEMRGKY KAALKADAQD
Predicted Reactivity:	Horse: 77%, Human: 100%, Rabbit: 85%
Characteristics:	This is a rabbit polyclonal antibody against MRPS25. It was validated on Western Blot.
Purification:	Affinity Purified

## Target Details

Target:	MRPS25
Alternative Name:	MRPS25 ( <a href="#">MRPS25 Products</a> )

## Target Details

Background:	<p>Mammalian mitochondrial ribosomal proteins are encoded by nuclear genes and help in protein synthesis within the mitochondrion. Mitochondrial ribosomes (mitoribosomes) consist of a small 28S subunit and a large 39S subunit. They have an estimated 75 % protein to rRNA composition compared to prokaryotic ribosomes, where this ratio is reversed. Another difference between mammalian mitoribosomes and prokaryotic ribosomes is that the latter contain a 5S rRNA. Among different species, the proteins comprising the mitoribosome differ greatly in sequence, and sometimes in biochemical properties, which prevents easy recognition by sequence homology. This gene encodes a 28S subunit protein. A pseudogene corresponding to this gene is found on chromosome 4.</p> <p>Alias Symbols: MRP-S25, RPMS25</p> <p>Protein Interaction Partner: CEP76, TUBGCP3, TP53, GRSF1, UBC, C1QBP, MRPS9, MRPS35, MRPS22, MRPS7, MRPS16, MRPS18B, HNRNPAB, CAND1, COPS5, MME, ICT1, DDX56,</p> <p>Protein Size: 173</p>
-------------	--

Molecular Weight:	19 kDa
Gene ID:	64432
NCBI Accession:	<a href="#">NM_022497</a> , <a href="#">NP_071942</a>
UniProt:	<a href="#">P82663</a>
Pathways:	<a href="#">SARS-CoV-2 Protein Interactome</a>

## Application Details

Restrictions:	For Research Use only
---------------	-----------------------

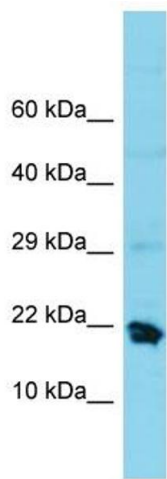
## Handling

Format:	Liquid
Concentration:	1 mg/mL
Buffer:	Liquid. Purified antibody supplied in 1x PBS buffer with 0.09 % (w/v) sodium azide and 2 % sucrose.
Preservative:	Sodium azide
Precaution of Use:	This product contains Sodium azide: a POISONOUS AND HAZARDOUS SUBSTANCE which should be handled by trained staff only.
Handling Advice:	Avoid repeat freeze-thaw cycles.

Handling

Storage:	-20 °C
Storage Comment:	For short term use, store at 2-8°C up to 1 week. For long term storage, store at -20°C in small aliquots to prevent freeze-thaw cycles.

Images



**Western Blotting**

**Image 1.**