



[Go to Product page](#)

Datasheet for ABIN2791677

anti-MRPS36 antibody (Middle Region)

1 Image

Overview

Quantity:	100 µL
Target:	MRPS36
Binding Specificity:	Middle Region
Reactivity:	Human, Rat, Mouse, Cow, Horse, Pig
Host:	Rabbit
Clonality:	Polyclonal
Conjugate:	This MRPS36 antibody is un-conjugated
Application:	Western Blotting (WB)

Product Details

Immunogen:	The immunogen is a synthetic peptide directed towards the middle region of Human MRPS36
Sequence:	SHSSVISQHS KGSKSPDLLM YQGPPDTAEI IKTLPQKYRR KLVSQEEMEF
Predicted Reactivity:	Cow: 100%, Horse: 93%, Human: 100%, Mouse: 86%, Pig: 100%, Rat: 93%
Characteristics:	This is a rabbit polyclonal antibody against MRPS36. It was validated on Western Blot.
Purification:	Affinity Purified

Target Details

Target:	MRPS36
Alternative Name:	MRPS36 (MRPS36 Products)
Background:	Mammalian mitochondrial ribosomal proteins are encoded by nuclear genes and help in protein

Target Details

synthesis within the mitochondrion. The mitochondrial ribosome (mitoribosome) consists of a small 28S subunit and a large 39S subunit. They have an estimated 75 % protein to rRNA composition compared to prokaryotic ribosomes, where this ratio is reversed. Another difference between mammalian mitoribosomes and prokaryotic ribosomes is that the latter contain a 5S rRNA. Among different species, the proteins comprising the mitoribosome differ greatly in sequence, and sometimes in biochemical properties, which prevents easy recognition by sequence homology. This gene encodes a 28S subunit protein. Pseudogenes corresponding to this gene are found on chromosomes 3p, 4q, 8p, 11q, 12q, and 20p.

Alias Symbols: MRP-S36

Protein Interaction Partner: UBC, SNRNP70, HSPA1L,

Protein Size: 103

Molecular Weight: 11 kDa

Gene ID: 92259

NCBI Accession: [NM_033281](#), [NP_150597](#)

UniProt: [P82909](#)

Application Details

Restrictions: For Research Use only

Handling

Format: Liquid

Concentration: 1 mg/mL

Buffer: Liquid. Purified antibody supplied in 1x PBS buffer with 0.09 % (w/v) sodium azide and 2 % sucrose.

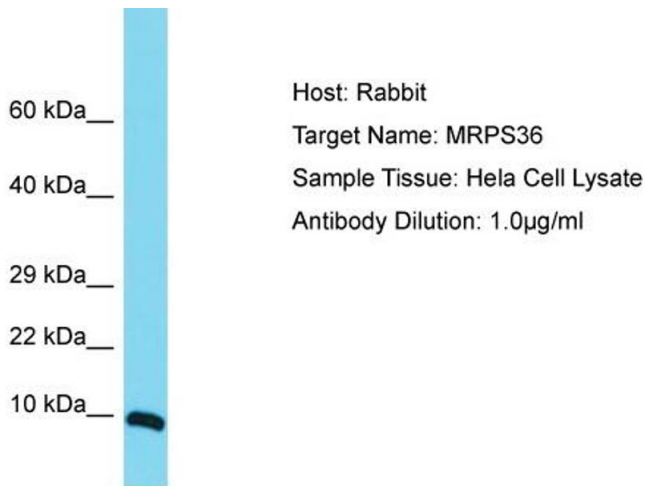
Preservative: Sodium azide

Precaution of Use: This product contains Sodium azide: a POISONOUS AND HAZARDOUS SUBSTANCE which should be handled by trained staff only.

Handling Advice: Avoid repeat freeze-thaw cycles.

Storage: -20 °C

Storage Comment: For short term use, store at 2-8°C up to 1 week. For long term storage, store at -20°C in small aliquots to prevent freeze-thaw cycles.



Western Blotting

Image 1. Host: Rabbit Target Name: MRPS36 Sample Tissue: Human Hela Whole Cell Antibody Dilution: 1ug/ml