

Datasheet for ABIN2791678  
**anti-MRPS36 antibody (N-Term)**



[Go to Product page](#)

1 Image

## Overview

Quantity:	100 µL
Target:	MRPS36
Binding Specificity:	N-Term
Reactivity:	Human, Rat, Cow, Horse, Pig, Dog, Rabbit
Host:	Rabbit
Clonality:	Polyclonal
Conjugate:	This MRPS36 antibody is un-conjugated
Application:	Western Blotting (WB)

## Product Details

Immunogen:	The immunogen is a synthetic peptide directed towards the N-terminal region of Human MRPS36
Sequence:	RFPDRRDNPV PNVSEALRSA GLPSHSSVIS QHSGKSKSPD LLMYQGPPDT
Predicted Reactivity:	Cow: 100%, Dog: 100%, Horse: 100%, Human: 100%, Pig: 100%, Rabbit: 100%, Rat: 93%
Characteristics:	This is a rabbit polyclonal antibody against MRPS36. It was validated on Western Blot.
Purification:	Affinity Purified

## Target Details

Target:	MRPS36
Alternative Name:	MRPS36 ( <a href="#">MRPS36 Products</a> )

## Target Details

---

**Background:** Mammalian mitochondrial ribosomal proteins are encoded by nuclear genes and help in protein synthesis within the mitochondrion. The mitochondrial ribosome (mitoribosome) consists of a small 28S subunit and a large 39S subunit. They have an estimated 75 % protein to rRNA composition compared to prokaryotic ribosomes, where this ratio is reversed. Another difference between mammalian mitoribosomes and prokaryotic ribosomes is that the latter contain a 5S rRNA. Among different species, the proteins comprising the mitoribosome differ greatly in sequence, and sometimes in biochemical properties, which prevents easy recognition by sequence homology. This gene encodes a 28S subunit protein. Pseudogenes corresponding to this gene are found on chromosomes 3p, 4q, 8p, 11q, 12q, and 20p.

Alias Symbols: MRP-S36

Protein Interaction Partner: UBC, SNRNP70, HSPA1L,

Protein Size: 103

---

Molecular Weight: 11 kDa

---

Gene ID: 92259

---

NCBI Accession: [NM\\_033281](#), [NP\\_150597](#)

---

UniProt: [P82909](#)

## Application Details

---

Restrictions: For Research Use only

## Handling

---

Format: Liquid

---

Concentration: 1 mg/mL

---

Buffer: Liquid. Purified antibody supplied in 1x PBS buffer with 0.09 % (w/v) sodium azide and 2 % sucrose.

---

Preservative: Sodium azide

---

Precaution of Use: This product contains Sodium azide: a POISONOUS AND HAZARDOUS SUBSTANCE which should be handled by trained staff only.

---

Handling Advice: Avoid repeat freeze-thaw cycles.

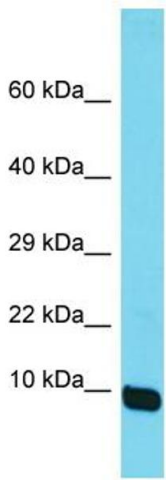
---

Storage: -20 °C

---

Storage Comment: For short term use, store at 2-8°C up to 1 week. For long term storage, store at -20°C in small

aliquots to prevent freeze-thaw cycles.



Host: Rabbit  
Target Name: MRPS36  
Sample Tissue: HeLa Cell Lysate  
Antibody Dilution: 1.0µg/ml

#### Western Blotting

**Image 1.** Host: Rabbit Target Name: MRPS36 Sample  
Tissue: Human HeLa Whole Cell Antibody Dilution: 1ug/ml