

Datasheet for ABIN2791679
anti-MTSS1L antibody (Middle Region)[Go to Product page](#)

1 Image

Overview

Quantity:	100 µL
Target:	MTSS1L
Binding Specificity:	Middle Region
Reactivity:	Human, Mouse, Horse, Rabbit, Rat, Zebrafish (Danio rerio), Cow, Dog, Guinea Pig
Host:	Rabbit
Clonality:	Polyclonal
Conjugate:	This MTSS1L antibody is un-conjugated
Application:	Western Blotting (WB)

Product Details

Immunogen:	The immunogen is a synthetic peptide directed towards the middle region of Human MTSS1L
Sequence:	DWKKAANQLD KDHAKYKRA RHEIKKKSSD TLKLQKKARK GKGDLQPQLD
Predicted Reactivity:	Cow: 100%, Dog: 100%, Guinea Pig: 100%, Horse: 100%, Human: 100%, Mouse: 100%, Rabbit: 100%, Rat: 100%, Zebrafish: 100%
Characteristics:	This is a rabbit polyclonal antibody against MTSS1L. It was validated on Western Blot.
Purification:	Affinity Purified

Target Details

Target:	MTSS1L
Alternative Name:	MTSS1L (MTSS1L Products)

Target Details

Background:	MTSS1L may function in actin bundling. Protein Interaction Partner: FBXW11, FUS, Protein Size: 291
-------------	--

Molecular Weight:	32 kDa
-------------------	--------

Gene ID:	92154
----------	-------

Application Details

Restrictions:	For Research Use only
---------------	-----------------------

Handling

Format:	Liquid
---------	--------

Concentration:	1 mg/mL
----------------	---------

Buffer:	Liquid. Purified antibody supplied in 1x PBS buffer with 0.09 % (w/v) sodium azide and 2 % sucrose.
---------	---

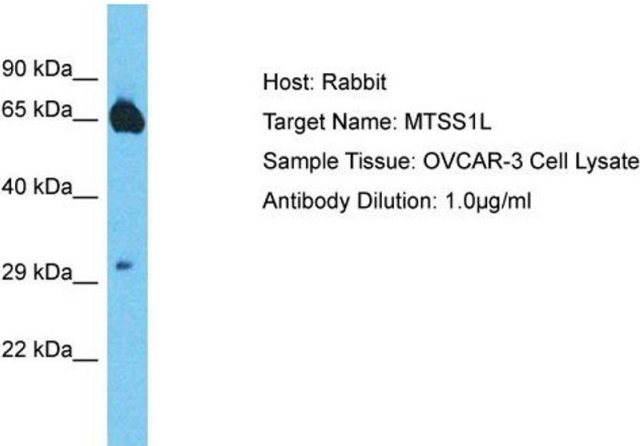
Preservative:	Sodium azide
---------------	--------------

Precaution of Use:	This product contains Sodium azide: a POISONOUS AND HAZARDOUS SUBSTANCE which should be handled by trained staff only.
--------------------	--

Handling Advice:	Avoid repeat freeze-thaw cycles.
------------------	----------------------------------

Storage:	-20 °C
----------	--------

Storage Comment:	For short term use, store at 2-8°C up to 1 week. For long term storage, store at -20°C in small aliquots to prevent freeze-thaw cycles.
------------------	---



Western Blotting

Image 1. Host: Rabbit Target Name: MTSS1L Sample Type: OVCAR-3 Whole Cell lysates Antibody Dilution: 1.0ug/ml MTSS1L is supported by BioGPS gene expression data to be expressed in OVCAR3