

Datasheet for ABIN2791681
anti-MYADML2 antibody (C-Term)[Go to Product page](#)

1 Image

Overview

Quantity:	100 µL
Target:	MYADML2
Binding Specificity:	C-Term
Reactivity:	Human, Mouse, Rabbit, Rat, Cow, Dog, Guinea Pig, Horse
Host:	Rabbit
Clonality:	Polyclonal
Conjugate:	This MYADML2 antibody is un-conjugated
Application:	Western Blotting (WB)

Product Details

Immunogen:	The immunogen is a synthetic peptide directed towards the C-terminal region of Human MYADML2
Sequence:	VVYTFLAVLL YLSAAVIWPV FCFDPKYGEP KRPPNCARGS CPWDSQLVVA
Predicted Reactivity:	Cow: 93%, Dog: 93%, Guinea Pig: 93%, Horse: 93%, Human: 100%, Mouse: 93%, Rabbit: 93%, Rat: 93%
Characteristics:	This is a rabbit polyclonal antibody against MYADML2. It was validated on Western Blot.
Purification:	Affinity Purified

Target Details

Target:	MYADML2
---------	---------

Target Details

Alternative Name: MYADML2 ([MYADML2 Products](#))

Background: The function of this protein remains unknown.

Alias Symbols: -

Protein Size: 307

Molecular Weight: 32 kDa

Gene ID: 255275

NCBI Accession: [NM_001145113](#), [NP_001138585](#)

UniProt: [A6NDP7](#)

Application Details

Restrictions: For Research Use only

Handling

Format: Liquid

Concentration: 1 mg/mL

Buffer: Liquid. Purified antibody supplied in 1x PBS buffer with 0.09 % (w/v) sodium azide and 2 % sucrose.

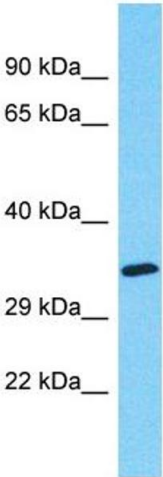
Preservative: Sodium azide

Precaution of Use: This product contains Sodium azide: a POISONOUS AND HAZARDOUS SUBSTANCE which should be handled by trained staff only.

Handling Advice: Avoid repeat freeze-thaw cycles.

Storage: -20 °C

Storage Comment: For short term use, store at 2-8°C up to 1 week. For long term storage, store at -20°C in small aliquots to prevent freeze-thaw cycles.



Western Blotting

Image 1.