

Datasheet for ABIN2791685
anti-MZT1 antibody (Middle Region)[Go to Product page](#)

1 Image

Overview

Quantity:	100 µL
Target:	MZT1
Binding Specificity:	Middle Region
Reactivity:	Human, Cow, Dog, Guinea Pig, Horse, Mouse, Rabbit, Rat, Zebrafish (Danio rerio)
Host:	Rabbit
Clonality:	Polyclonal
Conjugate:	This MZT1 antibody is un-conjugated
Application:	Western Blotting (WB)

Product Details

Immunogen:	The immunogen is a synthetic peptide directed towards the middle region of Human MZT1
Sequence:	LLEISRILNT GLDMETLSIC VRLCEQGINP EALSSVIKEL RKATEALKAA
Predicted Reactivity:	Cow: 100%, Dog: 100%, Guinea Pig: 100%, Horse: 100%, Human: 100%, Mouse: 93%, Rabbit: 100%, Rat: 93%, Zebrafish: 79%
Characteristics:	This is a rabbit polyclonal antibody against MZT1. It was validated on Western Blot.
Purification:	Affinity Purified

Target Details

Target:	MZT1
Alternative Name:	MZT1 (MZT1 Products)

Target Details

Background: MZT1 is required for gamma-tubulin complex recruitment to the centrosome.
Alias Symbols: C13orf37, MOZART1
Protein Interaction Partner: TUBGCP2, TUBGCP3, TUBG1, UBC, Mzt1, Mzt2,
Protein Size: 82

Molecular Weight: 9 kDa

Gene ID: 440145

NCBI Accession: [NM_001071775](#), [NP_001065243](#)

UniProt: [Q08AG7](#)

Application Details

Restrictions: For Research Use only

Handling

Format: Liquid

Concentration: 1 mg/mL

Buffer: Liquid. Purified antibody supplied in 1x PBS buffer with 0.09 % (w/v) sodium azide and 2 % sucrose.

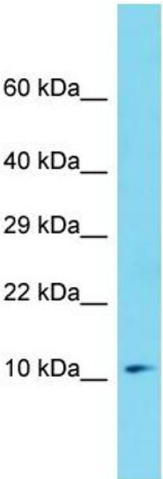
Preservative: Sodium azide

Precaution of Use: This product contains Sodium azide: a POISONOUS AND HAZARDOUS SUBSTANCE which should be handled by trained staff only.

Handling Advice: Avoid repeat freeze-thaw cycles.

Storage: -20 °C

Storage Comment: For short term use, store at 2-8°C up to 1 week. For long term storage, store at -20°C in small aliquots to prevent freeze-thaw cycles.



Host: Rabbit
Target Name: MZT1
Sample Tissue: 293T Cell Lysate
Antibody Dilution: 1.0µg/ml

Western Blotting

Image 1. Host: Rabbit Target Name: MZT1 Sample Tissue: Human 293T Whole Cell Antibody Dilution: 1ug/ml