

Datasheet for ABIN2791688  
**anti-NBPF6 antibody (C-Term)**[Go to Product page](#)

## 1 Image

## Overview

Quantity:	100 µL
Target:	NBPF6
Binding Specificity:	C-Term
Reactivity:	Human, Rat
Host:	Rabbit
Clonality:	Polyclonal
Conjugate:	This NBPF6 antibody is un-conjugated
Application:	Western Blotting (WB)

## Product Details

Immunogen:	The immunogen is a synthetic peptide directed towards the C-terminal region of Human NBPF6
Sequence:	STLYSFEDKQ VSLALVDKIK KDQEEIEDQS PPCPRLSQEL PEVKEQEVPE
Predicted Reactivity:	Human: 100%, Rat: 75%
Characteristics:	This is a rabbit polyclonal antibody against NBPF6. It was validated on Western Blot.
Purification:	Affinity Purified

## Target Details

Target:	NBPF6
Alternative Name:	NBPF6 ( <a href="#">NBPF6 Products</a> )
Background:	This gene is a member of the neuroblastoma breakpoint family (NBPF) which consists of

## Target Details

dozens of recently duplicated genes primarily located in segmental duplications on human chromosome 1. This gene family has experienced its greatest expansion within the human lineage and has expanded, to a lesser extent, among primates in general. Members of this gene family are characterized by tandemly repeated copies of DUF1220 protein domains. Gene copy number variations in the human chromosomal region 1q21.1, where most DUF1220 domains are located, have been implicated in a number of developmental and neurogenetic diseases such as microcephaly, macrocephaly, autism, schizophrenia, mental retardation, congenital heart disease, neuroblastoma, and congenital kidney and urinary tract anomalies.

Alias Symbols: -

Protein Size: 667

Molecular Weight: 75 kDa

Gene ID: 653149

NCBI Accession: [NM\\_001143987](#), [NP\\_001137459](#)

UniProt: [E9PDL3](#)

## Application Details

Restrictions: For Research Use only

## Handling

Format: Liquid

Concentration: 1 mg/mL

Buffer: Liquid. Purified antibody supplied in 1x PBS buffer with 0.09 % (w/v) sodium azide and 2 % sucrose.

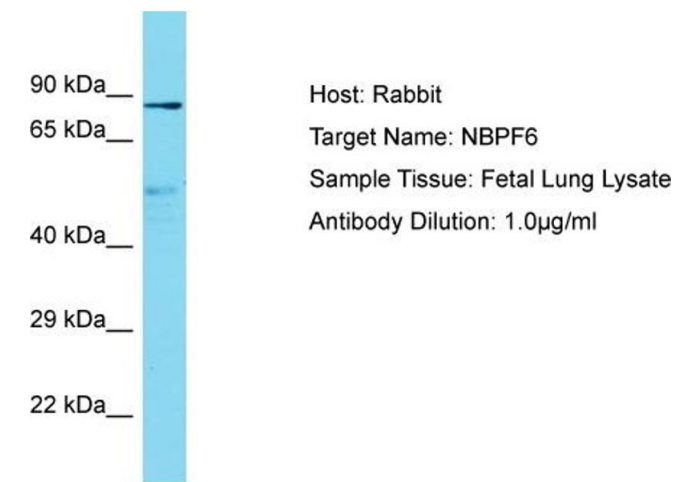
Preservative: Sodium azide

Precaution of Use: This product contains Sodium azide: a POISONOUS AND HAZARDOUS SUBSTANCE which should be handled by trained staff only.

Handling Advice: Avoid repeat freeze-thaw cycles.

Storage: -20 °C

Storage Comment: For short term use, store at 2-8°C up to 1 week. For long term storage, store at -20°C in small aliquots to prevent freeze-thaw cycles.



Western Blotting

**Image 1.** Host: Rabbit Target Name: NBPF6 Sample Type: Fetal Lung lysates Antibody Dilution: 1.0ug/ml