



Datasheet for ABIN2791697
anti-NBPF11 antibody (C-Term)



[Go to Product page](#)

1 Image

Overview

Quantity:	100 µL
Target:	NBPF11
Binding Specificity:	C-Term
Reactivity:	Human, Dog, Pig
Host:	Rabbit
Clonality:	Polyclonal
Conjugate:	This NBPF11 antibody is un-conjugated
Application:	Western Blotting (WB)

Product Details

Immunogen:	The immunogen is a synthetic peptide directed towards the C-terminal region of human NBPF24
Sequence:	KAEKEVPED SLEECAITCS NSHGPyDSNQ PHRKTKITFE EDKVDSTLIG
Predicted Reactivity:	Dog: 77%, Human: 100%, Pig: 77%
Characteristics:	This is a rabbit polyclonal antibody against NBPF24. It was validated on Western Blot.
Purification:	Affinity Purified

Target Details

Target:	NBPF11
Alternative Name:	NBPF24 (NBPF11 Products)

Target Details

Background: The function of this protein remains unknown.
Protein Size: 535

Molecular Weight: 58 kDa

UniProt: [A6NDD8](#)

Application Details

Restrictions: For Research Use only

Handling

Format: Liquid

Concentration: 1 mg/mL

Buffer: Liquid. Purified antibody supplied in 1x PBS buffer with 0.09 % (w/v) sodium azide and 2 % sucrose.

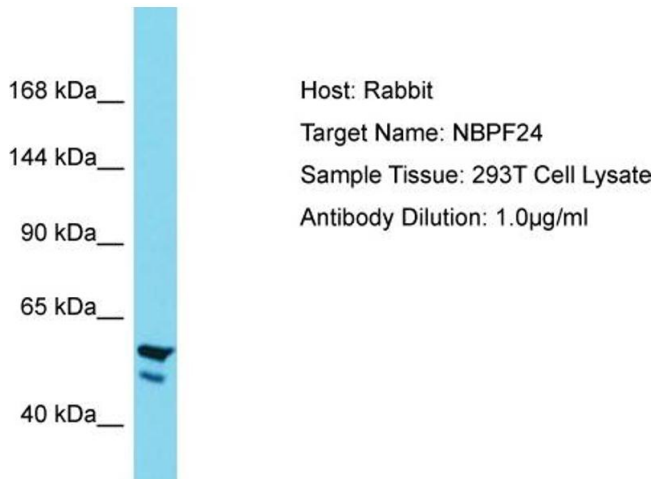
Preservative: Sodium azide

Precaution of Use: This product contains Sodium azide: a POISONOUS AND HAZARDOUS SUBSTANCE which should be handled by trained staff only.

Handling Advice: Avoid repeat freeze-thaw cycles.

Storage: -20 °C

Storage Comment: For short term use, store at 2-8°C up to 1 week. For long term storage, store at -20°C in small aliquots to prevent freeze-thaw cycles.



Western Blotting

Image 1. Host: Rabbit Target Name: NBPF24 Sample Tissue: Human 293T Whole Cell Antibody Dilution: 1 ug/ml