

Datasheet for ABIN2791701
anti-NPEPL1 antibody (C-Term)[Go to Product page](#)

1 Image

Overview

Quantity:	100 µL
Target:	NPEPL1
Binding Specificity:	C-Term
Reactivity:	Human
Host:	Rabbit
Clonality:	Polyclonal
Conjugate:	This NPEPL1 antibody is un-conjugated
Application:	Western Blotting (WB)

Product Details

Immunogen:	The immunogen is a synthetic peptide directed towards the C-terminal region of Human NPEPL1
Sequence:	HAGERATGFG VALLLALFGR ASEDPLLNLV SPLGCEVDVE EGDIGRDSKR
Predicted Reactivity:	Human: 100%
Characteristics:	This is a rabbit polyclonal antibody against NPEPL1. It was validated on Western Blot.
Purification:	Affinity Purified

Target Details

Target:	NPEPL1
Alternative Name:	NPEPL1 (NPEPL1 Products)

Target Details

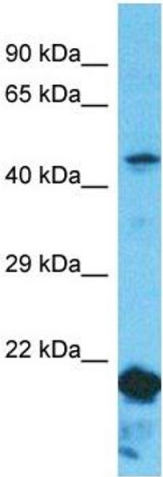
Background:	NPEPL1 probably catalyzes the removal of unsubstituted N-terminal amino acids from various peptides. Protein Interaction Partner: TFCP2, Protein Size: 475
Molecular Weight:	52 kDa
Gene ID:	79716

Application Details

Restrictions:	For Research Use only
---------------	-----------------------

Handling

Format:	Liquid
Concentration:	1 mg/mL
Buffer:	Liquid. Purified antibody supplied in 1x PBS buffer with 0.09 % (w/v) sodium azide and 2 % sucrose.
Preservative:	Sodium azide
Precaution of Use:	This product contains Sodium azide: a POISONOUS AND HAZARDOUS SUBSTANCE which should be handled by trained staff only.
Handling Advice:	Avoid repeat freeze-thaw cycles.
Storage:	-20 °C
Storage Comment:	For short term use, store at 2-8°C up to 1 week. For long term storage, store at -20°C in small aliquots to prevent freeze-thaw cycles.



Western Blotting

Image 1. Host: Rabbit Target Name: NPEPL1 Sample Type: ACHN Whole Cell lysates Antibody Dilution: 1.0ug/ml There is BioGPS gene expression data showing that NPEPL1 is expressed in ACHN