

Datasheet for ABIN2791702  
**anti-NPEPL1 antibody (N-Term)**[Go to Product page](#)

## 1 Image

## Overview

Quantity:	100 µL
Target:	NPEPL1
Binding Specificity:	N-Term
Reactivity:	Human, Mouse, Rat, Cow, Guinea Pig, Horse, Rabbit, Dog
Host:	Rabbit
Clonality:	Polyclonal
Conjugate:	This NPEPL1 antibody is un-conjugated
Application:	Western Blotting (WB)

## Product Details

Immunogen:	The immunogen is a synthetic peptide directed towards the N-terminal region of Human NPEPL1
Sequence:	CIVMVCEQPE VFASACALAR AFPLFTHRSG ASRRLEKKT VTEFFLVGQD
Predicted Reactivity:	Cow: 93%, Dog: 93%, Guinea Pig: 86%, Horse: 93%, Human: 100%, Mouse: 86%, Rabbit: 86%, Rat: 86%
Characteristics:	This is a rabbit polyclonal antibody against NPEPL1. It was validated on Western Blot.
Purification:	Affinity Purified

## Target Details

Target:	NPEPL1
---------	--------

## Target Details

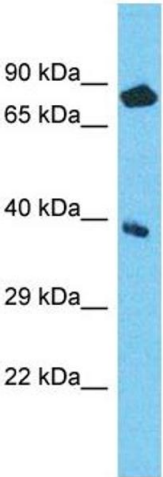
Alternative Name:	NPEPL1 ( <a href="#">NPEPL1 Products</a> )
Background:	NPEPL1 probably catalyzes the removal of unsubstituted N-terminal amino acids from various peptides. Protein Interaction Partner: TFCP2, Protein Size: 393
Molecular Weight:	43 kDa
Gene ID:	79716

## Application Details

Restrictions:	For Research Use only
---------------	-----------------------

## Handling

Format:	Liquid
Concentration:	1 mg/mL
Buffer:	Liquid. Purified antibody supplied in 1x PBS buffer with 0.09 % (w/v) sodium azide and 2 % sucrose.
Preservative:	Sodium azide
Precaution of Use:	This product contains Sodium azide: a POISONOUS AND HAZARDOUS SUBSTANCE which should be handled by trained staff only.
Handling Advice:	Avoid repeat freeze-thaw cycles.
Storage:	-20 °C
Storage Comment:	For short term use, store at 2-8°C up to 1 week. For long term storage, store at -20°C in small aliquots to prevent freeze-thaw cycles.



Western Blotting

**Image 1.** Host: Rabbit Target Name: NPEPL1 Sample Type: ACHN Whole Cell lysates Antibody Dilution: 1.0ug/ml There is BioGPS gene expression data showing that NPEPL1 is expressed in ACHN