



[Go to Product page](#)

Datasheet for ABIN2791767  
**anti-OR6M1 antibody (C-Term)**

1 Image

Overview

Quantity:	100 µL
Target:	OR6M1
Binding Specificity:	C-Term
Reactivity:	Human, Cow, Dog, Horse, Rat, Pig
Host:	Rabbit
Clonality:	Polyclonal
Conjugate:	This OR6M1 antibody is un-conjugated
Application:	Western Blotting (WB)

Product Details

Immunogen:	The immunogen is a synthetic peptide directed towards the C-terminal region of Human OR6M1
Sequence:	SNIFVYVRPN QNSSLDYDKV AAVLITVVTP LLNPFYSLR NEKVQEVLR
Predicted Reactivity:	Cow: 86%, Dog: 93%, Horse: 93%, Human: 100%, Pig: 86%, Rat: 86%
Characteristics:	This is a rabbit polyclonal antibody against OR6M1. It was validated on Western Blot.
Purification:	Affinity Purified

Target Details

Target:	OR6M1
Alternative Name:	OR6M1 ( <a href="#">OR6M1 Products</a> )

## Target Details

---

**Background:** Olfactory receptors interact with odorant molecules in the nose, to initiate a neuronal response that triggers the perception of a smell. The olfactory receptor proteins are members of a large family of G-protein-coupled receptors (GPCR) arising from single coding-exon genes. Olfactory receptors share a 7-transmembrane domain structure with many neurotransmitter and hormone receptors and are responsible for the recognition and G protein-mediated transduction of odorant signals. The olfactory receptor gene family is the largest in the genome. The nomenclature assigned to the olfactory receptor genes and proteins for this organism is independent of other organisms.

Alias Symbols: OR11-271

Protein Size: 313

---

**Molecular Weight:** 35 kDa

---

**Gene ID:** 390261

---

**NCBI Accession:** [NM\\_001005325](#), [NP\\_001005325](#)

---

**UniProt:** [Q8NGM8](#)

---

## Application Details

---

**Application Notes:** Optimal working dilution should be determined by the investigator.

---

**Restrictions:** For Research Use only

---

## Handling

---

**Format:** Liquid

---

**Concentration:** 1 mg/mL

---

**Buffer:** Liquid. Purified antibody supplied in 1x PBS buffer with 0.09 % (w/v) sodium azide and 2 % sucrose.

---

**Preservative:** Sodium azide

---

**Precaution of Use:** This product contains Sodium azide: a POISONOUS AND HAZARDOUS SUBSTANCE which should be handled by trained staff only.

---

**Handling Advice:** Avoid repeat freeze-thaw cycles.

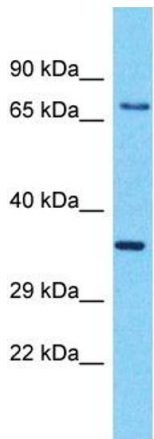
---

**Storage:** -20 °C

---

**Storage Comment:** For short term use, store at 2-8°C up to 1 week. For long term storage, store at -20°C in small aliquots to prevent freeze-thaw cycles.

---



Host: Rabbit  
Target Name: OR6M1  
Sample Tissue: RPMI-8226 Cell Lysate  
Antibody Dilution: 1.0µg/ml

### Western Blotting

**Image 1.** Host: Rabbit Target Name: OR6M1 Sample Type: RPMI-8226 Whole Cell lysates Antibody Dilution: 1.0ug/ml