

Datasheet for ABIN2791784

anti-Olfactory Receptor, Family 8, Subfamily D, Member 2 (OR8D2) (C-Term) antibody



[Go to Product page](#)

1 Image

Overview

| | |
|----------------------|---|
| Quantity: | 100 µL |
| Target: | Olfactory Receptor, Family 8, Subfamily D, Member 2 (OR8D2) |
| Binding Specificity: | C-Term |
| Reactivity: | Human |
| Host: | Rabbit |
| Clonality: | Polyclonal |
| Conjugate: | Un-conjugated |
| Application: | Western Blotting (WB) |

Product Details

| | |
|-----------------------|--|
| Immunogen: | The immunogen is a synthetic peptide directed towards the C-terminal region of Human OR8D2 |
| Sequence: | PPSSTTMEKE KVSSVFYITI IPMLNPLIYS LRNKDVKNAL KKMTRGRQSS |
| Predicted Reactivity: | Human: 100% |
| Characteristics: | This is a rabbit polyclonal antibody against OR8D2. It was validated on Western Blot. |
| Purification: | Affinity Purified |

Target Details

| | |
|-------------------|--|
| Target: | Olfactory Receptor, Family 8, Subfamily D, Member 2 (OR8D2) |
| Alternative Name: | OR8D2 (OR8D2 Products) |
| Background: | Olfactory receptors interact with odorant molecules in the nose, to initiate a neuronal response |

Target Details

that triggers the perception of a smell. The olfactory receptor proteins are members of a large family of G-protein-coupled receptors (GPCR) arising from single coding-exon genes. Olfactory receptors share a 7-transmembrane domain structure with many neurotransmitter and hormone receptors and are responsible for the recognition and G protein-mediated transduction of odorant signals. The olfactory receptor gene family is the largest in the genome. The nomenclature assigned to the olfactory receptor genes and proteins for this organism is independent of other organisms.

Alias Symbols: JCG2

Protein Interaction Partner: ALB,

Protein Size: 311

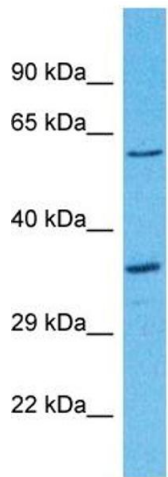
| | |
|-------------------|---|
| Molecular Weight: | 34 kDa |
| Gene ID: | 283160 |
| NCBI Accession: | NM_001002918 , NP_001002918 |
| UniProt: | Q9GZM6 |

Application Details

| | |
|--------------------|--|
| Application Notes: | Optimal working dilution should be determined by the investigator. |
| Restrictions: | For Research Use only |

Handling

| | |
|--------------------|---|
| Format: | Liquid |
| Concentration: | 1 mg/mL |
| Buffer: | Liquid. Purified antibody supplied in 1x PBS buffer with 0.09 % (w/v) sodium azide and 2 % sucrose. |
| Preservative: | Sodium azide |
| Precaution of Use: | This product contains Sodium azide: a POISONOUS AND HAZARDOUS SUBSTANCE which should be handled by trained staff only. |
| Handling Advice: | Avoid repeat freeze-thaw cycles. |
| Storage: | -20 °C |
| Storage Comment: | For short term use, store at 2-8°C up to 1 week. For long term storage, store at -20°C in small aliquots to prevent freeze-thaw cycles. |



Host: Rabbit
Target Name: OR8D2
Sample Tissue: 721_B Cell Lysate
Antibody Dilution: 1.0µg/ml

Western Blotting

Image 1. Host: Rabbit Target Name: OR8D2 Sample Type: 721_B Whole Cell lysates Antibody Dilution: 1.0ug/ml