

Datasheet for ABIN2791840  
**anti-OTOGL antibody (N-Term)**



[Go to Product page](#)

1 Image

## Overview

Quantity:	100 µL
Target:	OTOGL
Binding Specificity:	N-Term
Reactivity:	Human, Cow, Guinea Pig, Horse, Mouse, Rabbit, Rat
Host:	Rabbit
Clonality:	Polyclonal
Conjugate:	This OTOGL antibody is un-conjugated
Application:	Western Blotting (WB)

## Product Details

Immunogen:	The immunogen is a synthetic peptide directed towards the N-terminal region of human OTOGL
Sequence:	IQYLCEKDDV CVFQEVSVLN PGQSMIKYLE EDFCYAIECL EEKDNHTGFH
Predicted Reactivity:	Cow: 86%, Guinea Pig: 86%, Horse: 93%, Human: 100%, Mouse: 77%, Rabbit: 86%, Rat: 93%
Characteristics:	This is a rabbit polyclonal antibody against OTOGL. It was validated on Western Blot.
Purification:	Affinity Purified

## Target Details

Target:	OTOGL
Alternative Name:	OTOGL ( <a href="#">OTOGL Products</a> )
Background:	The function of this protein remains unknown.

## Target Details

---

Protein Size: 363

Molecular Weight: 39 kDa

UniProt: [Q3ZCN5](#)

## Application Details

---

Application Notes: Optimal working dilution should be determined by the investigator.

Restrictions: For Research Use only

## Handling

---

Format: Liquid

Concentration: 1 mg/mL

Buffer: Liquid. Purified antibody supplied in 1x PBS buffer with 0.09 % (w/v) sodium azide and 2 % sucrose.

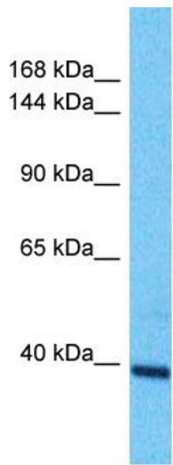
Preservative: Sodium azide

Precaution of Use: This product contains Sodium azide: a POISONOUS AND HAZARDOUS SUBSTANCE which should be handled by trained staff only.

Handling Advice: Avoid repeat freeze-thaw cycles.

Storage: -20 °C

Storage Comment: For short term use, store at 2-8°C up to 1 week. For long term storage, store at -20°C in small aliquots to prevent freeze-thaw cycles.



Host: Rabbit  
Target Name: OTOGL  
Sample Tissue: HepG2 Cell Lysate  
Antibody Dilution: 1.0µg/ml

### Western Blotting

**Image 1.** Host: Rabbit Target Name: OTOGL Sample Type: HepG2 Whole Cell lysates Antibody Dilution: 1.0ug/ml