

Datasheet for ABIN2791846
anti-PATE4 antibody (Middle Region)



[Go to Product page](#)

1 Image

Overview

Quantity:	100 µL
Target:	PATE4
Binding Specificity:	Middle Region
Reactivity:	Human
Host:	Rabbit
Clonality:	Polyclonal
Conjugate:	This PATE4 antibody is un-conjugated
Application:	Western Blotting (WB)

Product Details

Immunogen:	The immunogen is a synthetic peptide directed towards the middle region of Human PATE4
Sequence:	KENELCSTTA YFRGDKHMYS THMCKYKCRE EESSKRGLLR VTLCCDRNFC
Predicted Reactivity:	Human: 100%
Characteristics:	This is a rabbit polyclonal antibody against PATE4. It was validated on Western Blot.
Purification:	Affinity Purified

Target Details

Target:	PATE4
Alternative Name:	PATE4 (PATE4 Products)
Background:	PATE4 may modulate the function of nicotinic acetylcholine receptors and may enhance sperm

Target Details

motility.

Alias Symbols: PATE-B

Protein Size: 98

Molecular Weight: 10 kDa

Gene ID: 399968

NCBI Accession: [NM_001144874](#), [NP_001138346](#)

UniProt: [P0C8F1](#)

Application Details

Application Notes: Optimal working dilution should be determined by the investigator.

Restrictions: For Research Use only

Handling

Format: Liquid

Concentration: 1 mg/mL

Buffer: Liquid. Purified antibody supplied in 1x PBS buffer with 0.09 % (w/v) sodium azide and 2 % sucrose.

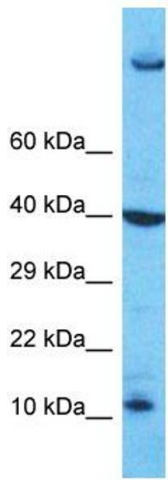
Preservative: Sodium azide

Precaution of Use: This product contains Sodium azide: a POISONOUS AND HAZARDOUS SUBSTANCE which should be handled by trained staff only.

Handling Advice: Avoid repeat freeze-thaw cycles.

Storage: -20 °C

Storage Comment: For short term use, store at 2-8°C up to 1 week. For long term storage, store at -20°C in small aliquots to prevent freeze-thaw cycles.



Host: Rabbit
Target Name: PATE4
Sample Tissue: Jurkat Cell Lysate
Antibody Dilution: 1.0µg/ml

Western Blotting

Image 1. Host: Rabbit Target Name: PATE4 Sample Type: Jurkat Whole Cell lysates Antibody Dilution: 1.0ug/ml