



[Go to Product page](#)

Datasheet for ABIN2791852

## anti-PGPEP1L antibody (N-Term)

### 1 Image

#### Overview

Quantity:	100 µL
Target:	PGPEP1L
Binding Specificity:	N-Term
Reactivity:	Human, Rabbit, Rat, Cow, Horse, Mouse, Pig
Host:	Rabbit
Clonality:	Polyclonal
Conjugate:	This PGPEP1L antibody is un-conjugated
Application:	Western Blotting (WB)

#### Product Details

Immunogen:	The immunogen is a synthetic peptide directed towards the N-terminal region of Human PGPEP1L
Sequence:	GMDTAAKAI ILEQSGKNQGY RDADIRSFWP EGGVCLPGSP DVLESGVCMK
Predicted Reactivity:	Cow: 79%, Horse: 86%, Human: 100%, Mouse: 79%, Pig: 86%, Rabbit: 86%, Rat: 79%
Characteristics:	This is a rabbit polyclonal antibody against PGPEP1L. It was validated on Western Blot.
Purification:	Affinity Purified

#### Target Details

Target:	PGPEP1L
Alternative Name:	PGPEP1L ( <a href="#">PGPEP1L Products</a> )

## Target Details

---

Background: The function of this protein remains unknown.  
Alias Symbols: -  
Protein Size: 196

---

Molecular Weight: 21 kDa

---

Gene ID: 145814

---

NCBI Accession: [NM\\_001102612](#), [NP\\_001096082](#)

---

UniProt: [A6NFU8](#)

---

## Application Details

---

Application Notes: Optimal working dilution should be determined by the investigator.

---

Restrictions: For Research Use only

---

## Handling

---

Format: Liquid

---

Concentration: 1 mg/mL

---

Buffer: Liquid. Purified antibody supplied in 1x PBS buffer with 0.09 % (w/v) sodium azide and 2 % sucrose.

---

Preservative: Sodium azide

---

Precaution of Use: This product contains Sodium azide: a POISONOUS AND HAZARDOUS SUBSTANCE which should be handled by trained staff only.

---

Handling Advice: Avoid repeat freeze-thaw cycles.

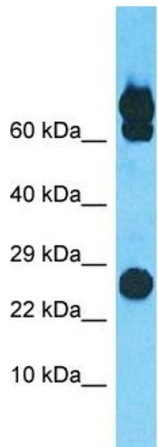
---

Storage: -20 °C

---

Storage Comment: For short term use, store at 2-8°C up to 1 week. For long term storage, store at -20°C in small aliquots to prevent freeze-thaw cycles.

---



Host: Rabbit  
Target Name: PGPEP1L  
Sample Tissue: COLO205 Cell Lysate  
Antibody Dilution: 1.0µg/ml

### Western Blotting

**Image 1.** Host: Rabbit Target Name: PGPEP1L Sample Type: COLO205 Whole Cell lysates Antibody Dilution: 1.0ug/ml