

Datasheet for ABIN2791853
anti-PHYHD1 antibody (C-Term)



[Go to Product page](#)

1 Image

Overview

Quantity:	100 µL
Target:	PHYHD1
Binding Specificity:	C-Term
Reactivity:	Human, Rat, Cow, Dog, Guinea Pig, Horse, Pig
Host:	Rabbit
Clonality:	Polyclonal
Conjugate:	This PHYHD1 antibody is un-conjugated
Application:	Western Blotting (WB)

Product Details

Immunogen:	The immunogen is a synthetic peptide directed towards the C-terminal region of Human PHYHD1
Sequence:	IHGEVVHKSK QNLSDRSRQA YTFHLMEASG TTWSPENWLQ PTAELPFPQL
Predicted Reactivity:	Cow: 93%, Dog: 86%, Guinea Pig: 86%, Horse: 86%, Human: 100%, Pig: 93%, Rat: 93%
Characteristics:	This is a rabbit polyclonal antibody against PHYHD1. It was validated on Western Blot.
Purification:	Affinity Purified

Target Details

Target:	PHYHD1
Alternative Name:	PHYHD1 (PHYHD1 Products)

Target Details

Background:	Isoform 1 has alpha-ketoglutarate-dependent dioxygenase activity. PHYHD1 does not show detectable activity towards fatty acid CoA thioesters. PHYHD1 is not expected to be active with phytanoyl CoA. Isoform 2 and isoform 3 probably lack enzyme activity. Protein Interaction Partner: APP, POT1, Protein Size: 291
-------------	--

Molecular Weight:	32 kDa
-------------------	--------

Gene ID:	254295
----------	--------

UniProt:	Q5SRE7
----------	------------------------

Application Details

Application Notes:	Optimal working dilution should be determined by the investigator.
--------------------	--

Restrictions:	For Research Use only
---------------	-----------------------

Handling

Format:	Liquid
---------	--------

Concentration:	1 mg/mL
----------------	---------

Buffer:	Liquid. Purified antibody supplied in 1x PBS buffer with 0.09 % (w/v) sodium azide and 2 % sucrose.
---------	---

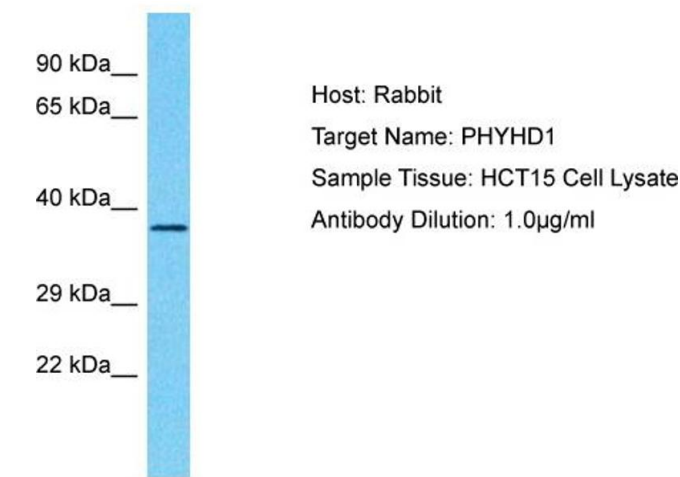
Preservative:	Sodium azide
---------------	--------------

Precaution of Use:	This product contains Sodium azide: a POISONOUS AND HAZARDOUS SUBSTANCE which should be handled by trained staff only.
--------------------	--

Handling Advice:	Avoid repeat freeze-thaw cycles.
------------------	----------------------------------

Storage:	-20 °C
----------	--------

Storage Comment:	For short term use, store at 2-8°C up to 1 week. For long term storage, store at -20°C in small aliquots to prevent freeze-thaw cycles.
------------------	---



Western Blotting

Image 1. Host: Rabbit Target Name: PHYHD1 Sample Type: HCT15 Whole Cell lysates Antibody Dilution: 1.0ug/ml