

Datasheet for ABIN2791854
anti-PIK3R6 antibody (C-Term)[Go to Product page](#)

1 Image

Overview

Quantity:	100 µL
Target:	PIK3R6
Binding Specificity:	C-Term
Reactivity:	Human, Mouse, Rat, Guinea Pig, Horse, Pig
Host:	Rabbit
Clonality:	Polyclonal
Conjugate:	This PIK3R6 antibody is un-conjugated
Application:	Western Blotting (WB)

Product Details

Immunogen:	The immunogen is a synthetic peptide directed towards the C-terminal region of Human PIK3R6
Sequence:	VKSSNLAGKS FSTVTNTFRT NNIQIQSRDQ RLLTSLDKD DQRTFRDVVR
Predicted Reactivity:	Guinea Pig: 79%, Horse: 79%, Human: 100%, Mouse: 79%, Pig: 85%, Rat: 79%
Characteristics:	This is a rabbit polyclonal antibody against PIK3R6. It was validated on Western Blot.
Purification:	Affinity Purified

Target Details

Target:	PIK3R6
Alternative Name:	PIK3R6 (PIK3R6 Products)

Target Details

Background:	<p>Phosphoinositide 3-kinase gamma is a lipid kinase that produces the lipid second messenger phosphatidylinositol 3,4,5-trisphosphate. The kinase is composed of a catalytic subunit and one of several regulatory subunits, and is chiefly activated by G protein-coupled receptors. This gene encodes a regulatory subunit, and is distantly related to the phosphoinositide-3-kinase, regulatory subunit 5 gene which is located adjacent to this gene on chromosome 7. The orthologous protein in the mouse binds to both the catalytic subunit and to G(beta/gamma), and mediates activation of the kinase subunit downstream of G protein-coupled receptors.</p> <p>Alias Symbols: C17orf38, HsT41028, p84, p87(PIKAP), p87PIKAP</p> <p>Protein Size: 754</p>
Molecular Weight:	84 kDa
Gene ID:	146850
NCBI Accession:	NM_001010855 , NP_001010855
UniProt:	Q5UE93
Pathways:	PI3K-Akt Signaling , Inositol Metabolic Process

Application Details

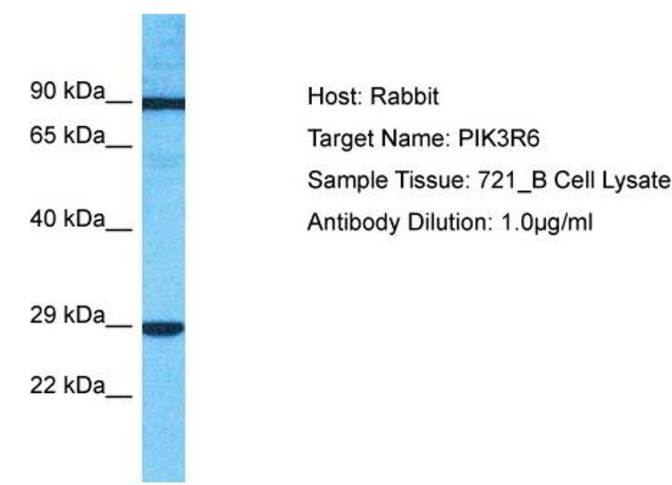
Application Notes:	Optimal working dilution should be determined by the investigator.
Restrictions:	For Research Use only

Handling

Format:	Liquid
Concentration:	1 mg/mL
Buffer:	Liquid. Purified antibody supplied in 1x PBS buffer with 0.09 % (w/v) sodium azide and 2 % sucrose.
Preservative:	Sodium azide
Precaution of Use:	This product contains Sodium azide: a POISONOUS AND HAZARDOUS SUBSTANCE which should be handled by trained staff only.
Handling Advice:	Avoid repeat freeze-thaw cycles.
Storage:	-20 °C
Storage Comment:	For short term use, store at 2-8°C up to 1 week. For long term storage, store at -20°C in small

aliquots to prevent freeze-thaw cycles.

Images



Western Blotting

Image 1. Host: Rabbit Target Name: PIK3R6 Sample Type: 721_B Whole Cell lysates Antibody Dilution: 1.0ug/ml