



[Go to Product page](#)

Datasheet for ABIN2791856
anti-PLCXD3 antibody (C-Term)

1 Image

Overview

Quantity:	100 µL
Target:	PLCXD3
Binding Specificity:	C-Term
Reactivity:	Human, Cow, Guinea Pig, Rabbit, Dog, Mouse, Rat
Host:	Rabbit
Clonality:	Polyclonal
Conjugate:	This PLCXD3 antibody is un-conjugated
Application:	Western Blotting (WB)

Product Details

Immunogen:	The immunogen is a synthetic peptide directed towards the C-terminal region of Human PLCXD3
Sequence:	KASTVVKGVA SGLRETITER ALPAMMQWVR TQKPGESGIN IVTADFVELG
Predicted Reactivity:	Cow: 100%, Dog: 100%, Guinea Pig: 100%, Human: 100%, Mouse: 100%, Rabbit: 100%, Rat: 100%
Characteristics:	This is a rabbit polyclonal antibody against PLCXD3. It was validated on Western Blot.
Purification:	Affinity Purified

Target Details

Target:	PLCXD3
Alternative Name:	PLCXD3 (PLCXD3 Products)

Target Details

Background: The function of this protein remains unknown.
Alias Symbols: -
Protein Size: 321

Molecular Weight: 36 kDa

Gene ID: 345557

NCBI Accession: [NM_001005473](#), [NP_001005473](#)

UniProt: [Q63HM9](#)

Application Details

Application Notes: Optimal working dilution should be determined by the investigator.

Restrictions: For Research Use only

Handling

Format: Liquid

Concentration: 1 mg/mL

Buffer: Liquid. Purified antibody supplied in 1x PBS buffer with 0.09 % (w/v) sodium azide and 2 % sucrose.

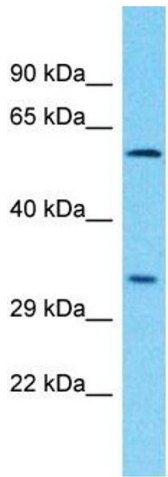
Preservative: Sodium azide

Precaution of Use: This product contains Sodium azide: a POISONOUS AND HAZARDOUS SUBSTANCE which should be handled by trained staff only.

Handling Advice: Avoid repeat freeze-thaw cycles.

Storage: -20 °C

Storage Comment: For short term use, store at 2-8°C up to 1 week. For long term storage, store at -20°C in small aliquots to prevent freeze-thaw cycles.



Host: Rabbit
Target Name: PLCXD3
Sample Tissue: Jurkat Cell Lysate
Antibody Dilution: 1.0µg/ml

Western Blotting

Image 1. Host: Rabbit Target Name: PLCXD3 Sample Type: Jurkat Whole Cell lysates Antibody Dilution: 1.0ug/ml