



[Go to Product page](#)

Datasheet for ABIN2791857

anti-**PLEKHA5** antibody (C-Term)

1 Image

Overview

Quantity:	100 µL
Target:	PLEKHA5
Binding Specificity:	C-Term
Reactivity:	Human, Mouse, Dog
Host:	Rabbit
Clonality:	Polyclonal
Conjugate:	This PLEKHA5 antibody is un-conjugated
Application:	Western Blotting (WB)

Product Details

Immunogen:	The immunogen is a synthetic peptide directed towards the C-terminal region of Human PLEKHA5
Sequence:	ASDQSPLQSP SNLRDNPFR TQTRRRDDKE LDTAIRENDV KPDHETPATE
Predicted Reactivity:	Dog: 86%, Human: 100%, Mouse: 92%
Characteristics:	This is a rabbit polyclonal antibody against PLEKHA5. It was validated on Western Blot.
Purification:	Affinity Purified

Target Details

Target:	PLEKHA5
Alternative Name:	PLEKHA5 (PLEKHA5 Products)

Target Details

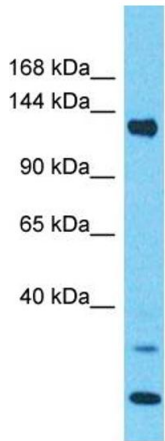
Background:	<p>The function of this protein remains unknown.</p> <p>Protein Interaction Partner: PDZD11, CIAO1, AURKB, LATS2, YWHAB, UPF1, SH3KBP1, ELAVL1, UBC, WASH2P, KANSL1, CCDC88B, SOGA1, SH3BP5L, CCDC92, CCDC186, PLEKHA5, KRT20, BLOC1S6, PPP1R13B, ARHGEF9, PLEKHA6, CEP250, KIF3A, CEP350, PROM1, SPTBN1, SPTAN1, PLEC, MAX, LAMB2, KTN1, KRT19, EXT</p> <p>Protein Size: 1282</p>
Molecular Weight:	146 kDa
Gene ID:	54477
Pathways:	SARS-CoV-2 Protein Interactome , The Global Phosphorylation Landscape of SARS-CoV-2 Infection

Application Details

Application Notes:	Optimal working dilution should be determined by the investigator.
Restrictions:	For Research Use only

Handling

Format:	Liquid
Concentration:	1 mg/mL
Buffer:	Liquid. Purified antibody supplied in 1x PBS buffer with 0.09 % (w/v) sodium azide and 2 % sucrose.
Preservative:	Sodium azide
Precaution of Use:	This product contains Sodium azide: a POISONOUS AND HAZARDOUS SUBSTANCE which should be handled by trained staff only.
Handling Advice:	Avoid repeat freeze-thaw cycles.
Storage:	-20 °C
Storage Comment:	For short term use, store at 2-8°C up to 1 week. For long term storage, store at -20°C in small aliquots to prevent freeze-thaw cycles.



Host: Rabbit
Target Name: PLEKHA5
Sample Tissue: NCI-H226 Cell Lysate
Antibody Dilution: 1.0µg/ml

Western Blotting

Image 1. Host: Rabbit Target Name: PLEKHA5 Sample Type: NCI-H226 Whole Cell lysates Antibody Dilution: 1.0ug/ml