

Datasheet for ABIN2791860  
**anti-PLSCR1 antibody (Middle Region)**[Go to Product page](#)

## 2 Images

## Overview

Quantity:	100 µL
Target:	PLSCR1
Binding Specificity:	Middle Region
Reactivity:	Human, Rat, Mouse, Dog, Rabbit, Cow, Guinea Pig, Horse, Zebrafish (Danio rerio)
Host:	Rabbit
Clonality:	Polyclonal
Conjugate:	This PLSCR1 antibody is un-conjugated
Application:	Western Blotting (WB)

## Product Details

Immunogen:	The immunogen is a synthetic peptide directed towards the middle region of Human PLSCR1
Sequence:	TGFETNNKYE IKNSFGQRVY FAAEDTDCCT RNCCGPSRPF TLRIIDNMGQ
Predicted Reactivity:	Cow: 93%, Dog: 100%, Guinea Pig: 100%, Horse: 100%, Human: 100%, Mouse: 100%, Rabbit: 100%, Rat: 100%, Zebrafish: 82%
Characteristics:	This is a rabbit polyclonal antibody against PLSCR1. It was validated on Western Blot.
Purification:	Affinity Purified

## Target Details

Target:	PLSCR1
Alternative Name:	PLSCR1 ( <a href="#">PLSCR1 Products</a> )

## Target Details

Background:	<p>PLSCR1 may mediate accelerated ATP-independent bidirectional transbilayer migration of phospholipids upon binding calcium ions that results in a loss of phospholipid asymmetry in the plasma membrane. PLSCR1 may play a central role in the initiation of fibrin clot formation, in the activation of mast cells and in the recognition of apoptotic and injured cells by the reticuloendothelial system.</p> <p>Alias Symbols: MMTRA1B</p> <p>Protein Interaction Partner: PKD2, P2RY6, ILF3, EWSR1, ESR2, DOCK2, CTSZ, CATSPER1, LONRF1, KRTAP4-2, ZNF587, LINC01547, KRTAP9-2, GDPD5, SCN1M1, DMRT3, VPS37C, PRR13, DEF6, LGALS9C, KRTAP4-11, KRTAP5-6, KRTAP10-3, KRTAP10-11, KRTAP10-9, LCE3C, LCE2D, TRIM42, BCL6B, LCE4A, ZNF417, MGA</p> <p>Protein Size: 318</p>
Molecular Weight:	34 kDa
Gene ID:	5359
NCBI Accession:	<a href="#">NM_021105</a> , <a href="#">NP_066928</a>
UniProt:	<a href="#">O15162</a>
Pathways:	<a href="#">Cellular Response to Molecule of Bacterial Origin</a>

## Application Details

Application Notes:	Optimal working dilution should be determined by the investigator.
Restrictions:	For Research Use only

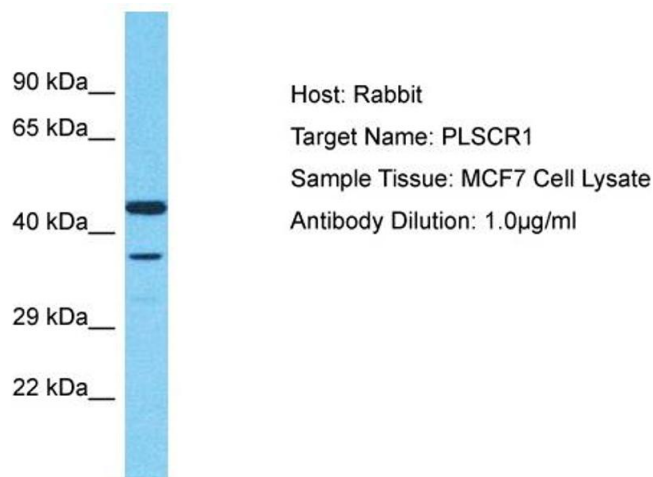
## Handling

Format:	Liquid
Concentration:	1 mg/mL
Buffer:	Liquid. Purified antibody supplied in 1x PBS buffer with 0.09 % (w/v) sodium azide and 2 % sucrose.
Preservative:	Sodium azide
Precaution of Use:	This product contains Sodium azide: a POISONOUS AND HAZARDOUS SUBSTANCE which should be handled by trained staff only.
Handling Advice:	Avoid repeat freeze-thaw cycles.
Storage:	-20 °C

## Handling

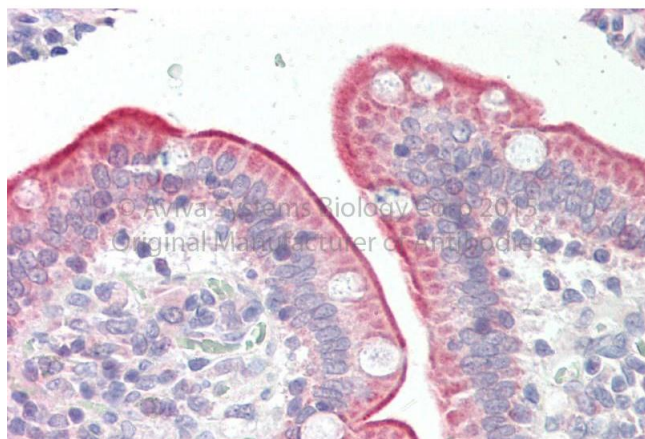
Storage Comment: For short term use, store at 2-8°C up to 1 week. For long term storage, store at -20°C in small aliquots to prevent freeze-thaw cycles.

## Images



### Western Blotting

**Image 1.** Host: Rabbit Target Name: PLSCR1 Sample Type: MCF7 Whole Cell lysates Antibody Dilution: 1.0 µg/ml PLSCR1 is strongly supported by BioGPS gene expression data to be expressed in Human MCF7 cells



### Immunohistochemistry

**Image 2.** Rabbit Anti-PLSCR1 Antibody Catalog Number: ARP71391 Formalin Fixed Paraffin Embedded Tissue: Human Adult Small intestine Observed Staining: Cytoplasm in hepatocytes Primary Antibody Concentration: 1:600 Secondary Antibody: Donkey anti-Rabbit-Cy3 Secondary Antibody Concentration: 1:200 Magnification: 20X Exposure Time: 0.5 – 2.0 sec