



[Go to Product page](#)

Datasheet for ABIN2791861
anti-PLSCR5 antibody (C-Term)

1 Image

Overview

Quantity:	100 µL
Target:	PLSCR5
Binding Specificity:	C-Term
Reactivity:	Mouse, Human, Rabbit, Rat, Dog, Guinea Pig, Horse
Host:	Rabbit
Clonality:	Polyclonal
Conjugate:	This PLSCR5 antibody is un-conjugated
Application:	Western Blotting (WB)

Product Details

Immunogen:	The immunogen is a synthetic peptide directed towards the C-terminal region of Human PLSCR5
Sequence:	SCWCPCYLQE LEIQAPPGTI VGYVTQKWDP FLPKFTIQNA NKEDILKIVG
Predicted Reactivity:	Dog: 100%, Guinea Pig: 100%, Horse: 100%, Human: 100%, Mouse: 93%, Rabbit: 93%, Rat: 100%
Characteristics:	This is a rabbit polyclonal antibody against PLSCR5. It was validated on Western Blot.
Purification:	Affinity Purified

Target Details

Target:	PLSCR5
Alternative Name:	PLSCR5 (PLSCR5 Products)

Target Details

Background: The function of this protein remains unknown.
Alias Symbols: -
Protein Size: 271

Molecular Weight: 30 kDa

Gene ID: 389158

NCBI Accession: [NM_001085420](#), [NP_001078889](#)

UniProt: [A0PG75](#)

Application Details

Application Notes: Optimal working dilution should be determined by the investigator.

Restrictions: For Research Use only

Handling

Format: Liquid

Concentration: 1 mg/mL

Buffer: Liquid. Purified antibody supplied in 1x PBS buffer with 0.09 % (w/v) sodium azide and 2 % sucrose.

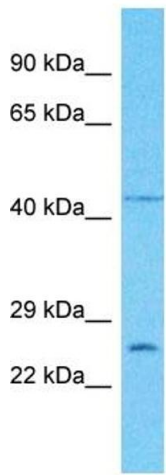
Preservative: Sodium azide

Precaution of Use: This product contains Sodium azide: a POISONOUS AND HAZARDOUS SUBSTANCE which should be handled by trained staff only.

Handling Advice: Avoid repeat freeze-thaw cycles.

Storage: -20 °C

Storage Comment: For short term use, store at 2-8°C up to 1 week. For long term storage, store at -20°C in small aliquots to prevent freeze-thaw cycles.



Host: Rabbit
Target Name: PLSCR5
Sample Tissue: HCT15 Cell Lysate
Antibody Dilution: 1.0µg/ml

Western Blotting

Image 1. Host: Rabbit Target Name: PLSCR5 Sample Type: HCT15 Whole Cell lysates Antibody Dilution: 1.0ug/ml