

Datasheet for ABIN2791866
anti-PPIAL4G antibody (C-Term)[Go to Product page](#)

1 Image

Overview

Quantity:	100 µL
Target:	PPIAL4G
Binding Specificity:	C-Term
Reactivity:	Human, Mouse, Cow, Dog, Goat, Guinea Pig, Horse, Rat, Sheep
Host:	Rabbit
Clonality:	Polyclonal
Conjugate:	This PPIAL4G antibody is un-conjugated
Application:	Western Blotting (WB)

Product Details

Immunogen:	The immunogen is a synthetic peptide directed towards the C-terminal region of Human PPIAL4G
Sequence:	NGSQFFICTA KTEWLDGKHV AFGKVKERVN IVEAMEHFGY RNSKTSKKIT
Predicted Reactivity:	Cow: 85%, Dog: 85%, Goat: 85%, Guinea Pig: 85%, Horse: 85%, Human: 100%, Mouse: 85%, Rat: 86%, Sheep: 85%
Characteristics:	This is a rabbit polyclonal antibody against PPIAL4G. It was validated on Western Blot.
Purification:	Affinity Purified

Target Details

Target:	PPIAL4G
---------	---------

Target Details

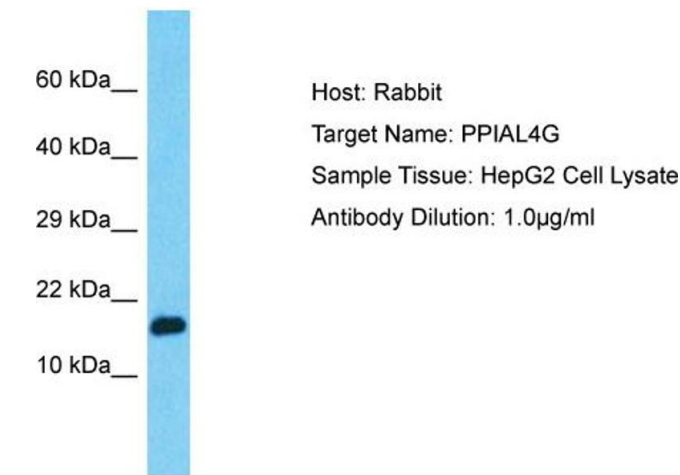
Alternative Name:	PPIAL4G (PPIAL4G Products)
Background:	<p>PPIAL4G is a PPlases accelerate the folding of proteins. It catalyzes the cis-trans isomerization of proline imidic peptide bonds in oligopeptides.</p> <p>Alias Symbols: BX284650.5</p> <p>Protein Size: 164</p>
Molecular Weight:	18 kDa
Gene ID:	644591
NCBI Accession:	NM_001123068 , NP_001116540
UniProt:	A2BFH1

Application Details

Application Notes:	Optimal working dilution should be determined by the investigator.
Restrictions:	For Research Use only

Handling

Format:	Liquid
Concentration:	1 mg/mL
Buffer:	Liquid. Purified antibody supplied in 1x PBS buffer with 0.09 % (w/v) sodium azide and 2 % sucrose.
Preservative:	Sodium azide
Precaution of Use:	This product contains Sodium azide: a POISONOUS AND HAZARDOUS SUBSTANCE which should be handled by trained staff only.
Handling Advice:	Avoid repeat freeze-thaw cycles.
Storage:	-20 °C
Storage Comment:	For short term use, store at 2-8°C up to 1 week. For long term storage, store at -20°C in small aliquots to prevent freeze-thaw cycles.



Western Blotting

Image 1. Host: Rabbit Target Name: PPIAL4G Sample Type: HepG2 Whole Cell lysates Antibody Dilution: 1.0ug/ml