



[Go to Product page](#)

Datasheet for ABIN2791867
anti-PPIAL4C antibody (C-Term)

1 Image

Overview

Quantity:	100 µL
Target:	PPIAL4C
Binding Specificity:	C-Term
Reactivity:	Human, Horse, Mouse, Rat, Sheep, Cow, Dog, Goat, Guinea Pig
Host:	Rabbit
Clonality:	Polyclonal
Conjugate:	This PPIAL4C antibody is un-conjugated
Application:	Western Blotting (WB)

Product Details

Immunogen:	The immunogen is a synthetic peptide directed towards the C-terminal region of Human PPIAL4C
Sequence:	NGSQFFICAA KTEWLDGKHV AFGKVKERVN IVEAMEHFGY RNSKTSKKIT
Predicted Reactivity:	Cow: 79%, Dog: 79%, Goat: 79%, Guinea Pig: 79%, Horse: 85%, Human: 100%, Mouse: 79%, Rat: 86%, Sheep: 79%
Characteristics:	This is a rabbit polyclonal antibody against PPIAL4C. It was validated on Western Blot.
Purification:	Affinity Purified

Target Details

Target:	PPIAL4C
---------	---------

Target Details

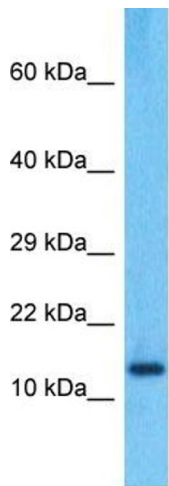
Alternative Name:	PPIAL4C (PPIAL4C Products)
Background:	PPIases accelerate the folding of proteins. It catalyzes the cis-trans isomerization of proline imidic peptide bonds in oligopeptides. Protein Size: 164
Molecular Weight:	18 kDa
Gene ID:	653598
NCBI Accession:	XP_003846538
UniProt:	Q9Y536

Application Details

Application Notes:	Optimal working dilution should be determined by the investigator.
Restrictions:	For Research Use only

Handling

Format:	Liquid
Concentration:	1 mg/mL
Buffer:	Liquid. Purified antibody supplied in 1x PBS buffer with 0.09 % (w/v) sodium azide and 2 % sucrose.
Preservative:	Sodium azide
Precaution of Use:	This product contains Sodium azide: a POISONOUS AND HAZARDOUS SUBSTANCE which should be handled by trained staff only.
Handling Advice:	Avoid repeat freeze-thaw cycles.
Storage:	-20 °C
Storage Comment:	For short term use, store at 2-8°C up to 1 week. For long term storage, store at -20°C in small aliquots to prevent freeze-thaw cycles.



Host: Rabbit
Target Name: PPIAL4C
Sample Tissue: A549 Cell Lysate
Antibody Dilution: 1.0µg/ml

Western Blotting

Image 1. Host: Rabbit Target Name: PPIAL4C Sample Type: A549 Whole Cell lysates Antibody Dilution: 1.0ug/ml