



[Go to Product page](#)

Datasheet for ABIN2791871
anti-PRAMEF1 antibody (N-Term)

1 Image

Overview

Quantity:	100 µL
Target:	PRAMEF1
Binding Specificity:	N-Term
Reactivity:	Human
Host:	Rabbit
Clonality:	Polyclonal
Conjugate:	This PRAMEF1 antibody is un-conjugated
Application:	Western Blotting (WB)

Product Details

Immunogen:	The immunogen is a synthetic peptide directed towards the N-terminal region of Human PRAMEF1
Sequence:	GAWALSCFPE TTSKRQTAED CPRMGHEHQPL KVFIDICLKE IPQDECLRYL
Predicted Reactivity:	Human: 100%
Characteristics:	This is a rabbit polyclonal antibody against PRAMEF1. It was validated on Western Blot.
Purification:	Affinity Purified

Target Details

Target:	PRAMEF1
Alternative Name:	PRAMEF1 (PRAMEF1 Products)

Target Details

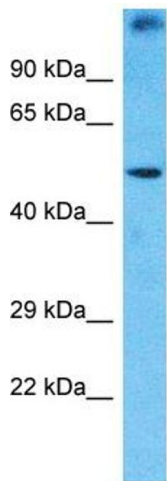
Background:	This gene is a member of the PRAME (preferentially expressed antigen of melanoma) gene family which is expressed in many cancers but may function in reproductive tissues during development. Alias Symbols: - Protein Interaction Partner: UBC, Protein Size: 474
Molecular Weight:	55 kDa
Gene ID:	65121
NCBI Accession:	NM_023013 , NP_075389
UniProt:	O95521
Pathways:	Retinoic Acid Receptor Signaling Pathway

Application Details

Application Notes:	Optimal working dilution should be determined by the investigator.
Restrictions:	For Research Use only

Handling

Format:	Liquid
Concentration:	1 mg/mL
Buffer:	Liquid. Purified antibody supplied in 1x PBS buffer with 0.09 % (w/v) sodium azide and 2 % sucrose.
Preservative:	Sodium azide
Precaution of Use:	This product contains Sodium azide: a POISONOUS AND HAZARDOUS SUBSTANCE which should be handled by trained staff only.
Handling Advice:	Avoid repeat freeze-thaw cycles.
Storage:	-20 °C
Storage Comment:	For short term use, store at 2-8°C up to 1 week. For long term storage, store at -20°C in small aliquots to prevent freeze-thaw cycles.



Host: Rabbit
Target Name: PRAMEF1
Sample Tissue: Jurkat Cell Lysate
Antibody Dilution: 1.0µg/ml

Western Blotting

Image 1. Host: Rabbit Target Name: PRAMEF1 Sample Type: Jurkat Whole Cell lysates Antibody Dilution: 1.0ug/ml