

Datasheet for ABIN2791872
anti-PRAMEF7 antibody (N-Term)[Go to Product page](#)

1 Image

Overview

Quantity:	100 µL
Target:	PRAMEF7
Binding Specificity:	N-Term
Reactivity:	Human
Host:	Rabbit
Clonality:	Polyclonal
Conjugate:	This PRAMEF7 antibody is un-conjugated
Application:	Western Blotting (WB)

Product Details

Immunogen:	The immunogen is a synthetic peptide directed towards the N-terminal region of Human PRAMEF7
Sequence:	ATASFPEALS QKQTADNCPG TGRQQPFMVF IDLCLKNRTL DECLTHLLEW
Predicted Reactivity:	Human: 100%
Characteristics:	This is a rabbit polyclonal antibody against PRAMEF7. It was validated on Western Blot.
Purification:	Affinity Purified

Target Details

Target:	PRAMEF7
Alternative Name:	PRAMEF7 (PRAMEF7 Products)

Target Details

Background: The function of this protein remains unknown.
Alias Symbols: -
Protein Size: 474

Molecular Weight: 52 kDa

Gene ID: 441871

NCBI Accession: [NM_001012277](#), [NP_001012277](#)

UniProt: [Q5VXH5](#)

Application Details

Application Notes: Optimal working dilution should be determined by the investigator.

Restrictions: For Research Use only

Handling

Format: Liquid

Concentration: 1 mg/mL

Buffer: Liquid. Purified antibody supplied in 1x PBS buffer with 0.09 % (w/v) sodium azide and 2 % sucrose.

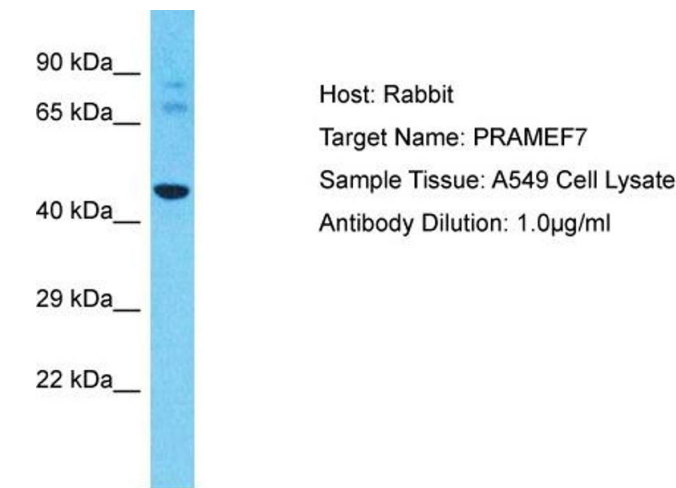
Preservative: Sodium azide

Precaution of Use: This product contains Sodium azide: a POISONOUS AND HAZARDOUS SUBSTANCE which should be handled by trained staff only.

Handling Advice: Avoid repeat freeze-thaw cycles.

Storage: -20 °C

Storage Comment: For short term use, store at 2-8°C up to 1 week. For long term storage, store at -20°C in small aliquots to prevent freeze-thaw cycles.



Western Blotting

Image 1. Host: Rabbit Target Name: PRAMEF7 Sample Type: A549 Whole Cell lysates Antibody Dilution: 1.0ug/ml