

Datasheet for ABIN2791873

**anti-PRAMEF17 antibody (N-Term)**[Go to Product page](#)**1** Image

## Overview

Quantity:	100 µL
Target:	PRAMEF17
Binding Specificity:	N-Term
Reactivity:	Human
Host:	Rabbit
Clonality:	Polyclonal
Conjugate:	This PRAMEF17 antibody is un-conjugated
Application:	Western Blotting (WB)

## Product Details

Immunogen:	The immunogen is a synthetic peptide directed towards the N-terminal region of Human PRAMEF17
Sequence:	EAMSKRQTVE DYPRTGEHQ LKVFIDLCQK ESTLDECLSY LCRWIHYRRG
Predicted Reactivity:	Human: 100%
Characteristics:	This is a rabbit polyclonal antibody against PRAMEF17. It was validated on Western Blot.
Purification:	Affinity Purified

## Target Details

Target:	PRAMEF17
Alternative Name:	PRAMEF17 ( <a href="#">PRAMEF17 Products</a> )

## Target Details

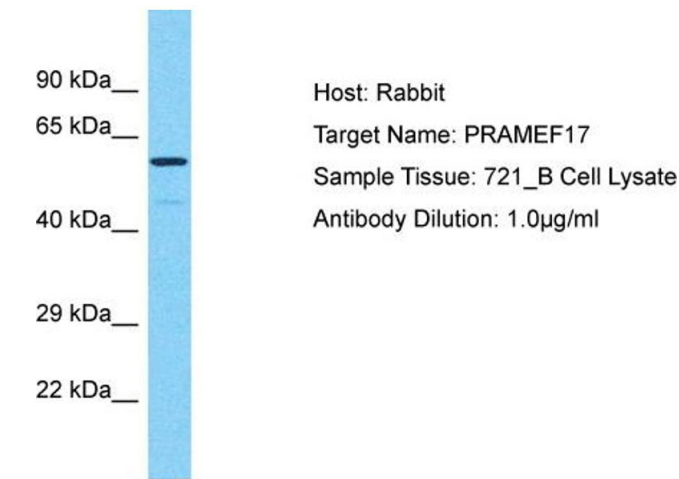
Background:	The function of this protein remains unknown. Alias Symbols: - Protein Interaction Partner: UBC, Protein Size: 474
Molecular Weight:	55 kDa
Gene ID:	391004
NCBI Accession:	<a href="#">NM_001099851</a> , <a href="#">NP_001093321</a>
UniProt:	<a href="#">Q5VTA0</a>

## Application Details

Application Notes:	Optimal working dilution should be determined by the investigator.
Restrictions:	For Research Use only

## Handling

Format:	Liquid
Concentration:	1 mg/mL
Buffer:	Liquid. Purified antibody supplied in 1x PBS buffer with 0.09 % (w/v) sodium azide and 2 % sucrose.
Preservative:	Sodium azide
Precaution of Use:	This product contains Sodium azide: a POISONOUS AND HAZARDOUS SUBSTANCE which should be handled by trained staff only.
Handling Advice:	Avoid repeat freeze-thaw cycles.
Storage:	-20 °C
Storage Comment:	For short term use, store at 2-8°C up to 1 week. For long term storage, store at -20°C in small aliquots to prevent freeze-thaw cycles.



Western Blotting

**Image 1.** Host: Rabbit Target Name: PRAMEF17 Sample Type: 721\_B Whole Cell lysates Antibody Dilution: 1.0ug/ml